



QVI CLUB / XCHANGEWORLD
2013 RESORT DIRECTORY
9TH EDITION

Relax Refresh Revive

An elegant hideaway on a sunlit private beach looking out to emerald islands ★

13 beautifully designed rooms set in flower-scented gardens or facing the sea ★

An infinity lap pool and an outdoor spa pavilion for relaxation ★

An exquisitely creative vegetarian menu at Amala Restaurant to refresh your palate ★

Warm, attentive service that makes you feel completely at home ★

Experience a revival of your senses at Prana ★

koh samui
prana
BEACH
VILLAS

16/8, 16/13-26 Moo 4, Bophut,
Koh Samui, Suratthani, 84320 Thailand
Reservations: +66 7724 6362
www.pranaresorts.com



Getting the most out of your holiday

How to book a holiday with QVI Club and XchangeWorld

- Decide which resorts or destinations you would like to visit, then check for availability using the Online Availability function at www.xchangeworld.com/xchange_online.html
- For Home Resorts, Limited Collection resorts and Exclusive Boutique Collection, and for affiliated resorts that are not listed online, please contact our Customer Experience Ambassadors to check availability.
- Have at least 3 travel date options and locations. The more flexible you are, the higher your chances of securing availability at the resort of your choice.
- Contact our Customer Experience Ambassadors at customercare@qviclub.com/customercare@vanamala-india.com to make your reservation as early as possible. For a full list of contact details, please refer to page 2.
- In your reservation email, please provide us with your name, QVI or IR ID, and package ID to help us expedite your request.
- Pay your Usage* and Xchange Fees* to confirm your booking, if you have not already done so.

** For QVI Club Home Resorts booking, only Usage Fee applies. For XchangeWorld resort bookings, Usage and Xchange Fees apply.*

Helpful Tips

- Be flexible with your travelling dates and locations and have options spread out over a few weeks. This will increase your chance of obtaining availability.
- Don't be afraid to explore alternative destinations.
- Consider off-peak periods for holiday travel when there are fewer crowds and lower prices for airfares, restaurants, tourist activities and attractions.
- Plan your holiday travel based on which resorts have availability, and not on-demand.

Booking Guidelines

- QVI Club membership is for holiday travel and not for business travel or cities-only travel.
- Reservations at Home Resorts or any QVI Club affiliated resorts are subject to availability and are not for specific travel dates or peak period travel.
- Reservations have to be made in advance. Last minute bookings will not be accepted.
- Occupancy is usually for 2 to 4 people, depending on the maximum occupancy policy of the resort selected.
- Website photos of the resorts and rooms may not be representative; your room may not appear exactly as in the photos. Only the unit type and the occupancy are as indicated in your Confirmation Voucher.
- Additional booking fees may apply for some destinations or resorts. You will be advised at the point of booking.
- Most resorts require a security deposit at check-in, to be set against damage, loss or non-payment of purchases. This deposit will be refunded on check-out if no costs have been incurred.

For more information, please refer to page 2 for all our telephone and contact details

www.qviclub.com
www.xchangeworld.com



HOME
RESORTS
07

LIMITED
COLLECTION
RESORTS
11

EXCLUSIVE
BOUTIQUE
COLLECTION
21

AUSTRALIA
24

AUSTRIA
26

BRAZIL
26

CHINA
27

DOMINICAN
REPUBLIC
28

EGYPT
29

INDIA
31

This Resort Directory features a selection of resorts available through QVI Club and XchangeWorld. Categorised by countries, and accompanied by information on resort facilities, room amenities and nearby attractions, these resort profiles will help you make an informed decision on the best place to take your next vacation.

For the full selection of resorts, please visit:

www.qviclub.com
for Home Resorts and Limited Collection resorts

www.xchangeworld.com
for XchangeWorld and Exclusive Boutique Collection resorts

For reservations, or to get more information about the resorts featured here or on our websites, please contact our Customer Experience Ambassadors who will be delighted to help you.

Email: customer-care@qviclub.com

International: +603 7949 8288 (all languages)

Vanamala India office

For members residing in India, please contact:

Tel: +91 22 6139 9500

Email: customer-care@vanamala-india.com

Operating hours: Monday to Friday, 9am – 6pm
(Mumbai time: GMT +5.5 hours)



TESTIMONIALS

05

INDEX

70

UAE

68

TURKEY

65

THAILAND

62

SPAIN

58

PORTUGAL

57

PHILIPPINES

53

MEXICO

52

MAURITIUS

52

MALAYSIA

49

KENYA

48

JAMAICA

48

INDONESIA

46



www.qviclub.com



www.xchangeworld.com

All information is correct at the time of printing. Resort details are subject to change without prior notice.



The only way to win is to lose

Lose those extra kilos and win your shape back with InShape weight-management solutions.



INSHAPE
FOR A HEALTHIER, HAPPIER YOU!



Exclusively available from **QNET**

www.inshapeprogram.com



PHYSIO RADIANCE

Paris

Activate Your Skin Cells

Experience the Enhancing
Beauty Secrets of Physio Radiance



Exclusively available from **QNET**

Physio Radiance Age Defying Patch Wake Up to Flawless Skin!

NEW

Vacations are always filled with

unforgettable memories, be they fun-filled, heartwarming or simply exhilarating. Travelling with QVI Club and XchangeWorld brings you great experiences especially with more than 2,000 resorts to choose from. So what are you waiting for? Call us now to plan for your next QVI vacation!

If you have booked a holiday with us, share your story with other members! Send in your holiday testimonials and pictures to customercare@qviclub.com.



It was one of the most memorable holidays me and my husband Steven have ever had. The place is right out of the photograph and a calm serene paradise is just what we need and Prana just hit the spot. Away for all the stress and the hustle 'n bustle of daily life. I will definitely go back to Prana Resorts as it's where I left a piece of my heart.

Thank you for my home away from home.

Jennifer Wallington
Prana Hotels & Resorts
Koh Samui, Thailand



The welcome was very warm and nice. A beautiful 'Rudraksh Mala' was given as soon as we arrived.

The location, the ambience and the view of Ganga Ji from the resort in the morning was heaven.

Overall everything in the resort was mind blowing. Most memorable part was the snowfall in Mussorie.

Hitesh Babariya
Naini Retreat
India



I am very happy with all the services and privileges that I enjoyed throughout my stay in the hotel, which has exceeded all my expectations.

Azzam Yousif
Saeed Swalmia
Xclusive Maples
Hotel Apartments
Dubai, UAE



We stayed at Hotel Michael in Prague last March 2013. The hotel was excellent and the food served was delicious. QVI Points also made it easy for us to book tours and activities. We really enjoyed our holiday!

Afef Abdelkrim Ep El Abed
Hotel Michael
Prague



My family and I enjoyed our holiday in Hotel Diar Lemdin. We had everything we wished for - beautiful resort, warm welcome and good service! Thank you QVI Points!

Naoui Noujoun
Hotel Diar Lemdin Hammet
Tunisia



We enjoyed camp fire and karaoke singing every night. There were many sports activities available to play with for the kids. The property was very very ROYAL.

Divya Agrawal
Haveli Harl Ganga
Haridwar, India



QVI Club Bronze Plus

Take your travel experience to the next level

QVI Club is back with the latest product in store!

Introducing **QVI Club Bronze Plus** – a specially designed membership type that provides you with the full range of QVI Club Bronze Membership benefits, PLUS a 1-year virtual access to the QVI Points redemption website.

Enjoy a fantastic week-long holiday in more than 2,000 resorts worldwide, every alternate year over 5 years; and the flexibility to customise, book and enjoy your holidays through the QVI Points real-time interactive website (without the need to first purchase a QVI Points Privileged Access Qualifying product.)

Get it now, in your Qualify and Redeem eStore!

For more information on this exciting membership, visit www.qnet.net

Enquiries:

International: customercare@qviclub.com

India (for members residing in India): customercare@vanamala-india.com

Operating hours: Monday to Friday, 9am - 6pm (Mumbai time: GMT +5.5 hours)



HOME RESORTS

QVI Club offers you a range of well-appointed accommodations in Thailand, South Africa and Turkey. Make our Home Resorts your first choice when you visit Bangkok, Koh Samui, Phuket, Cape Town and Antalya. Each resort promises a different vacation experience and great adventures, but always accompanied by warm and welcoming hospitality.

Centurion All Suite Hotel, Cape Town

The Centurion All Suite Hotel is one of South Africa's leading self-catering holiday accommodation hotels, located in Sea Point, Cape Town. It is situated close to amenities, shops, restaurants, the V&A Waterfront, the beachfront and the Promenade. The hotel's proximity to the azure waters of the Atlantic Ocean with its alluring beaches and the many other natural wonders of the area makes it the ideal venue from which to experience the Cape.



Unit Size/Max Occupancy:

- 1 Bedroom / 4
- 2 Bedroom / 6



Unit Amenities:

- Kitchen fully equipped with microwave oven and full stove
- Television



Resort Facilities:

- 24-hour security
- Airport transfers
- Secure on-site parking
- Swimming pool



Area Facilities:

- Beaches
- City centre
- Restaurants
- Shopping
- V&A waterfront
- Watersports
- Whale watching



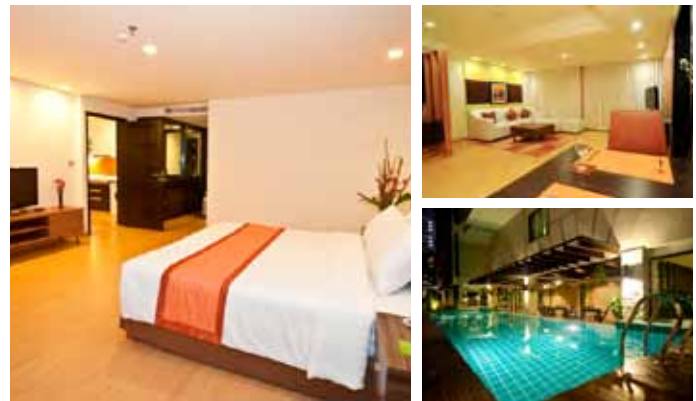
Check-in: 2pm
Check-out: 10am

Address: Corner Main & Frere Road, Sea Point, Rhine Road 8050, Cape Town, South Africa
Tel: +27 21 434 0006
Fax: +27 21 434 0051
Web: www.qviclub.com

Aspen Suites, Bangkok

Renew and recharge at one of the finest boutique serviced apartment hotels in Sukhumvit, Bangkok. Aspen Suites is located in Sukhumvit Soi 2, a quiet lane off Sukhumvit Road and a stone's throw from the JW Marriott Bangkok. Aspen Suites provides a sense of privacy yet is perfectly placed at the core of Bangkok's business, shopping and entertainment district. Phloenchit and Nana BTS Skytrain stations are just a few minutes away.

The rooms are designed in a fresh contemporary style finished in a pleasing neutral colour scheme, and include in-room entertainment, an in-house LAN connection, and a fully equipped kitchenette.



Unit Size/Max Occupancy:

- 1 Bedroom / 4



Unit Amenities:

- Air-conditioning
- Partial kitchen
- Telephone
- Television
- Hairdryer
- Washing machine



Resort Facilities:

- Aspen Cafe
- Laundry service
- Free wi-fi access at lobby



Area Facilities:

- Entertainment
- Restaurant
- Shopping malls
- Supermarket

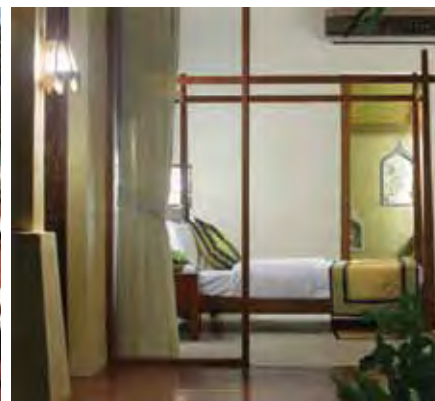


Check-in: 2pm
Check-out: 12pm

Nearest Airport: Suvarnabhumi Airport - 32km
Address: 65/1 Sukhumvit Soi 2, Bangkok 10110, Thailand
Tel: +66 2638 1888
Web: www.qviclub.com

Prana Beach Villas, Koh Samui

Prana Beach Villas offers a unique opportunity to experience total rejuvenation amidst stunning nature, beautiful Thai-inspired accommodation and wonderful vegetarian cuisine at Amala Restaurant. It is ideally positioned on the idyllic northern coast of Koh Samui on Big Buddha Beach, looking over the sea to the neighbouring island of Koh Phangan. Surrounded by the myriad blues and turquoises of the sea and the resort's infinity pool, your stay at this eco-friendly boutique resort will be in complete harmony with the environment. The atmosphere will help to relax, refresh and re-energise you, melting all stress away.



Unit Size/Max Occupancy:

Hotel Unit / 2



Unit Amenities:

- Air-conditioning
- Bathroom Amenities
- Coffee & Tea-making Facilities
- Hairdryer
- Mini bar
- Non-smoking Rooms
- Private balcony or porch
- In-room Safe Deposit
- Telephone



Resort Facilities:

- Amala Vegetarian Restaurant
- Spa On the Beach
- Open-air sala for massages
- Pool Bar
- Swimming pool
- Tour desk
- Transportation Services
- Laundry Service (upon request)



Area Facilities:

- Anghthong Marine Park
- Big Buddha
- Crocodile and Snake Farm
- Elephant Trekking
- Fullmoon parties
- Jetskiing / Sailing / Windsurfing
- Safari show / Safari tour
- Samui Golf Club
- Scuba diving / Snorkelling
- Shopping



Check-in: 4pm
Check-out: 10am

Nearest Airport: Samui International Airport – 5km
Address: 16/8, 16/13-26 Moo 4, Bophut, Koh Samui, Suratthani, 84320 Thailand
Tel: +66 7724 6362 Fax: +66 7724 6369
Website: www.pranaresorts.com

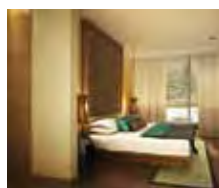
Note: Non-smoking resort. Pets are not allowed. Airport transfers are available upon request – surcharge applies.

Prana Resorts Nandana, Koh Samui

Under Construction

Set in a gorgeous landscape of indigenous trees and flowering plants, our new resort lives up to its Sanskrit name of Nandana, meaning 'Paradise'. Inspired by a Thai fishing basket, the iconic woven roof of the main reception building curves dramatically upward, while beyond, the buildings housing the guest rooms and spa surround a large free-form swimming pool.

Native materials and fabrics are used throughout the resort, creating a palette of soothing earth tones with bursts of vibrant colour. From the extensive menu of indulgent spa treatments, to a refreshing salad by the pool, or a delightful cocktail in the lounge, Nandana is designed to cocoon you in a blissful state of relaxation throughout your stay.



Unit Size/Max Occupancy:

Hotel Unit / 2



Unit Amenities:

- Air-conditioning
- Bathroom amenities
- Coffee and tea-making facilities
- Hairdryer
- Mini bar
- Wi-fi access
- Bathrobe and slippers
- In-room safe
- Telephone
- Private terrace
- Iron and ironing board (upon request)
- DVD player
- Satellite TV



Resort Facilities:

- Swimming pool
- Children's pool
- Kids Club and playground
- Pool bar
- Wine bar
- Spa with private treatment rooms
- Open-air sala for massages
- Fitness room
- Steam room
- Souvenir shop
- Tour desk
- Transportation services
- Laundry service (upon request)



Area Facilities:

- Anghthong Marine Park
- Big Buddha
- Crocodile and Snake Farm
- Elephant trekking
- Full moon parties
- Jetskiing / sailing / windsurfing
- Safari show / safari tour
- Samui Golf Club
- Scuba diving / snorkelling
- Shopping



Check-in: 4pm
Check-out: 10am

Nearest Airport: Samui International Airport – 5km
Address: 16/8, 16/13-26 Moo 4, Bophut, Koh Samui, Suratthani, 84320 Thailand
Tel: +66 7724 6362 Fax: +66 7724 6369 Website: www.pranaresorts.com

Note: Non-smoking resort. Pets are not allowed. Airport transfers are available upon request – surcharge applies.

Patong Tower Condominium, Phuket

Patong Tower Condominium is your home away from home and is perfect for family getaways. You get all the comforts and conveniences you are used to even while on holiday. Each one-bedroom unit can comfortably accommodate 4 persons, and is fully furnished with partial kitchen facilities, a dining area and a cosy lounge room. This retreat is set right in the centre of all the action in Phuket, just steps from the beach and various water sports, lots of great shopping, and numerous restaurants and cafes.



Unit Size/Max Occupancy:

1 Bedroom / 4



Unit Amenities:

- Air-conditioning
- Balcony
- Coffee & tea making facilities
- DVD player
- Hairdryer
- Iron & iron board
- Microwave oven
- Partial kitchen
- Refrigerator
- Safe
- Telephone
- Television



Resort Facilities:

- Security
- Tour counter
- Car park



Area Facilities:

- Beach
- Hair salons
- Museums
- Restaurants
- Shopping malls
- Water sports

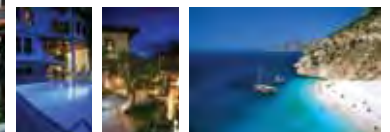


Check-in: 12pm
Check-out: 10am

Nearest Airport: Phuket International Airport - 55km
Address: 110/ 19-20 Thaveewong Road, Patong Beach, Phuket 83150, Thailand
Tel: +66 7634 6233 / +66 818918887
Web: www.qviclub.com

Doğan Hotel, Antalya

This charming hotel is situated in Kaleiçi, the small historic section of the old city in the midst of modern, sprawling Antalya. Kaleiçi is filled with meandering streets, massive stone walls and picturesque old houses, which are the result of the town's history of being in turn settled by the Romans, the Byzantines, the Seljuk Turks, and finally the Ottomans. The Doğan Hotel is a restored historical building with rooms that surround a charming garden and dining terrace filled with orange trees and greenery. The sunlit pool with its terrace for sunbathing, and a small, relaxing waterfall in the garden, provide restful areas in which to enjoy this lovely hotel.



Unit Size/Max Occupancy:

Hotel Unit / 2



Unit Amenities:

- Air-conditioning
- Balcony
- Bathtub / shower
- Hairdryer
- Safe
- Sitting area



Resort Facilities:

- Ecegiz Restaurant
- Garden Bar
- Swimming pool
- Wi-fi



Area Facilities:

- Antalya City Centre
- Aspendos Theater
- Beach
- City Museum
- Düden Waterfalls
- Hadrian's Gate
- Perge
- Saklıkent
- Yacht marina



Check-in: 2pm
Check-out: 12pm

Nearest Airport: Antalya Airport (AYT) - 35 minutes' drive
Address: Kılınçarslan Mah. Mermerli, Banyo Sok. No: 5 07100, Kaleiçi, Antalya
Tel: + 90 242 247 46 54
Fax: +90 242 247 40 06
Web: www.qviclub.com

LIMITED COLLECTION RESORTS

A collection of handpicked resorts available for booking for over a period of 1 or 2 years only, giving members a wider selection from our expansive list of resorts. The current selection covers Jakarta, Bandung, Pattaya, Kuala Lumpur, Tunisia and Orlando, and various popular destinations in India.

Alpine Club, Nainital, Uttarakhand

Straight out of a fairy tale, this red Swiss Chalet springs into view out of the dense oak forest on Ayarpatta Hills on the quiet Raj Bhavan Road of Nainital. Don't miss marvelling at the gigantic eucalyptus tree that presides over the chalet, or take a walk through one of the many wooded trails from the hotel, straight out of a William Wordsworth poem.



Unit Size/Max Occupancy:

1 Bedroom / 4 Adults



Unit Amenities:

- Bathroom equipped with modern tubs and fixtures
- Heater
- LCD Television
- Partial kitchenette
- Seating



Resort Facilities:

- Auto rental
- BBQ restaurant
- Coffee shop / snack bar
- Conference hall
- Helipad (landing charges applicable)
- Indoor game room
- Open air al fresco restaurant
- Ski school with trainer



Area Facilities:

- Ayarpatta Hills
- Boating
- Butterfly and Insect Museum
- Excursions
- Hiking
- Horse riding
- Naini Lake
- Kilbury
- Pangot
- Shopping



Check-in: 12pm
Check-out: 10am

Nearest Airport: Indira Gandhi International Airport, New Delhi (500 km); Jolly Grant, Dehradun (320 km)
Address: Aryapatta Hill, Near Aurobindo Ashram, Nainital, Uttarakhand, India
Tel: +91 5942 236254
Web: www.ctcauli.com

Cliff Top Club, Auli, Uttarakhand

Cliff Top Club at Auli is a high altitude adventure resort in the Garhwal Himalayas of Uttarakhand. Sitting more than 10,000 feet above sea level, it is India's most scenic location amid the snow-clad Himalayas.

In summers, when the snow gives way to carpets of grass and flowers, hikers and trekkers will find numerous marked walks and mountain bike trails. Trekkers to Kuari Pass and the Valley of Flowers prefer to stay on at Cliff Top Club at the end of the trek to avail the luxury of hot baths and lavish cuisine.



Unit Size/Max Occupancy:

1 Bedroom / 4 Adults



Unit Amenities:

- Cable television
- Heaters
- Intercom
- Partial kitchen
- Refrigerator



Resort Facilities:

- Bonfire entertainment evenings with games, music and dance
- En-suite oil massage services
- Game room
- Medical facilities
- Restaurants/outdoor decks
- Ski equipment and instructors



Area Facilities:

- Auli Village
- Fishing / River rafting
- Gordon Reserve Forest
- Hemkund Saheb
- Hiking, trekking, nature walks
- Holy shrine of Badrinath
- Joshimath
- Mountain biking / Skiing
- Mountaineering, rock climbing
- Tapovan



Check-in: 12pm
Check-out: 10am

Nearest Airport: Pantnager Airport (75km)
Address: Auli Skiing Village, Distt. Chamoli, Garhwal, Uttarakhand
Tel: +91 1389 222446
Web: www.ctcauli.com

Heritage Resorts Coorg, Karnataka

26 well-appointed cottages dot the lush green slopes of this quietly gorgeous hillside retreat in Monnangeri Village in Galibeedu. Each is set apart from the others to guarantee privacy, and within, the sense of peace continues in the charmingly cosy interior with natural stone floors, wood and native fabrics. Outdoors, lounge by the infinity pool that overlooks mist-shrouded hills, explore hiking trails on foot or by bicycle, visit a nearby plantation or go kite-flying. And when all this activity piques your appetite, the resort's restaurant will more than satisfy with its cuisine that ranges from indigenous Coorg, to southern Indian, northern Indian and continental.



Unit Size/Max Occupancy:

Cottage / 2 Adults



Unit Amenities:

- Air-conditioning
- Coffee / Tea maker
- Daily housekeeping
- Extra towels
- Fruit basket on arrival
- Intercom
- Iron / Ironing board
- LCD Television
- Mini bar
- Safety deposit locker
- Shower & bath



Resort Facilities:

- 24-hour front desk
- Conference hall
- Currency exchange facility
- Doctor on call
- Health club
- Multi-cuisine restaurant
- Restaurant
- Room service (on request)
- Swimming pool (adult & children)
- Spa
- Travel desk



Area Facilities:

- Dubare Elephant Camp
- Gaddige (Raja's Tomb)
- Kakabe
- Madikeri Fort Museum
- Omkareshwara Temple
- Raja Seat Garden
- Tadiandamol Hill



Check-in: 12pm
Check-out: 12pm

Nearest Airport: Bajpe Airport Mangalore (IXE) (151 km)
Address: 50 / 3, 1st Monnangeri Village, Galibeedu, Madikeri 571 201 Karnataka, India
Tel: +91 8272 265794
Web: www.carnivalhotels.com

Mountain Club, Bhimtal, Uttarakhand

Mountain Club, the best kept secret in the lake region of Nainital, is open to nature lovers and seekers of a tranquil retreat in the area's most beautiful location, June Estate at Bhimtal.

Mountain Club is a heritage property that is now renovated to accommodate the tastes of a discerning clientele while still retaining its old world charm. The refurbished blocks are beautifully panelled in wood on the outside, enabling the architecture to merge with the dense forested environs.



Unit Size/Max Occupancy:

1 Bedroom / 4 Adults



Unit Amenities:

- Cable Television
- Intercom
- Partial kitchenette



Resort Facilities:

- Badminton
- Bonfire area
- Conference / multipurpose hall
- Cricket
- Indoor games
- Table tennis



Area Facilities:

- Boating
- Birding trails
- Butterfly Museum
- Day trips to Nainital
- Excursions to Ranikhet, Kainchi Temple, Ghorakhal Temple
- Horse-riding
- Para gliding



Check-in: 12pm
Check-out: 10am

Nearest Airport: Pantnagar (77km)
Address: 61, June Estate, Bhimtal, Kumaon, Uttarakhand
Tel: +91 5947 253233
Web: www.ctcauli.com

The Den, Corbett National Park, Uttarakhand

The Den is a resort where you can find peace and solace amidst the wild. Nestled in the untouched reserved forest, Shivalik Range and Kosi River, The Den is the ultimate tourist destination in Jim Corbett National Park.

Corbett Tiger Reserve closes from July to October, when safaris to the core area of Dhikala are not carried out. Wildlife safaris continue from two other ranges during this season.



Unit Size/Max Occupancy:

1 Bedroom / 4 Adults



Unit Amenities:

- Cable Television
- Private deck and roof tops



Resort Facilities:

- Billiard
- Central club house with library and souvenir shop
- Jeep and elephant safaris
- Mango Orchards
- Multipurpose hall
- Restaurant



Area Facilities:

- Cycling
- Elephant and jeep safaris
- Excursion tours
- Guided birding tours
- Local Kumani cultural evenings
- Trekking



Check-in: 12pm
Check-out: 10am

Nearest Airport: Indira Gandhi International Airport, New Delhi (275km)
Address: Kumeria Reserve Forest, Distt. Almora, Uttarakhand
Tel: +91 9756 607850
Web: www.thedencorbett.com

Impiana KLCC Hotel, Kuala Lumpur

Impiana KLCC Hotel, a 15-storey business class deluxe hotel is nestled right in the heart of the city, positioned among prominent landmarks and in the city's business, shopping and entertainment area.



Unit Size/Max Occupancy:

Hotel Unit / 2



Unit Amenities:

- Daily local newspaper
- Electronic safe
- High speed broadband internet
- International direct dialling facility
- Iron and ironing board
- Satellite television with in-house movies and radio channels



Resort Facilities:

- Business centre
- Convenience store
- Currency exchange
- Doctor-on-call
- Gymnasium
- Infinity-edged pool
- Laundry
- Non-smoking floors
- Pool bar
- Swasana Spa



Area Facilities:

- Bukit Bintang
- KL Tower
- KL Convention Centre
- Petronas Twin Towers
- Suria KLCC



Check-in: 2pm
Check-out: 12pm

Nearest Airport: Kuala Lumpur International Airport (60min drive)
Nearest LRT: KL Monorail – Raja Chulan (5 min walk)
Address: No. 13 Jalan Pinang, 50450 Kuala Lumpur, Malaysia
Tel: +603 2147 1111
Web: www.qvclub.com

Adelphi Suites, Bangkok

At the hub of Bangkok, just off one of the city's longest and most historic thoroughfares, Sukhumvit Road, lies Adelphi Suites with the Nana BTS SkyTrain Station literally at its doorstep. This serviced apartment is also within easy reach of the best in business, dining, shopping and entertainment spots in the area.

Adelphi Suites combines a residence-like atmosphere with the usual warm Thai hospitality, making it a fitting choice for long or short stays.



Unit Size/Max Occupancy:

1 Bedroom / 2



Unit Amenities:

- 32" LCD flat screen TV
- DVD player
- High-speed Internet
- Digital cordless IDD telephone
- Individual thermostat control
- Microwave oven
- Electric hot pot
- Electric stove and cooker hood
- Mini Bar
- Hair dryer



Resort Facilities:

- 24-hour reception, maintenance and security services
- Monsoon Café, Restaurant and Cocktail Bar
- Outdoor swimming pool
- Fitness centre
- Wi-Fi access in the lobby
- Internet stations
- Daily housekeeping services
- Laundry and dry cleaning services



Area Facilities:

- Chatuchak Weekend Market
- Lumpini National Boxing Stadium
- Yaowarat (China Town)
- Grand Palace
- Robinson Department Store
- Terminal 21 Market Street
- Suan Lum Night Bazaar



Check-in: 2pm
Check-out: 12pm

Nearest Airport: Suvarnabhumi International Airport (32 km / 36 minutes away)
Address: Nana BTS Skytrain Station, 6 Sukhumvit Soi 8, Bangkok, 10110, Thailand
Tel: +66 2 617 5100
Web: www.qviclub.com

Arcadia Suites, Bangkok

A new all-suite 4-star serviced apartment in Bangkok, Arcadia Suites offers spacious and stylish accommodation in the most central part of Bangkok city. Located in Nai Lert, Arcadia Suites is just a few minutes' walk from the BTS Phloen Chit Sky-train station, and is within easy reach of the business districts of Nai Lert, Wireless & Chidlom. It is also close to Central Chidlom and All Seasons Place shopping centres, with a wealth of dining and entertainment spots nearby, making it the perfect choice for travellers. It is also near the American, British, Vietnamese, Japanese, Italy, Republic of Chile, The Czech Republic and Swiss embassies.



Unit Size/Max Occupancy:

1 Bedroom / 2



Unit Amenities:

- 32" LED flat screen TV
- Satellite TV channel
- WiFi, USB Port, LAN Connection
- In-room safety box
- Kitchenette
- Microwave
- Iron and iron board
- Washing machine
- Bathtub with handheld shower
- Separate shower cubicle with rain shower
- Hairdryer



Resort Facilities:

- Swimming pool
- R Lounge
- Gym
- 24-hour reception and concierge
- 24-hour CCTV security surveillance system
- Wi-Fi and hi-speed Internet broadband connection
- Laundry and dry cleaning services
- Room service
- Daily housekeeping services
- Airport transfer, limousine and tour services



Area Facilities:

- Chatuchak Weekend Market
- Lumpini National Boxing Stadium
- Yaowarat (China Town)
- Grand Palace
- Suan Lum Night Bazaar



Check-in: 2pm
Check-out: 12pm

Nearest Airport: Suvarnabhumi International Airport (29 km / 30 minutes away)
Address: 15 Soi Wireless Road, Nai Lert, Lumpini Sub-District, Pathumwan District, Bangkok 10330, Thailand
Tel: +66 2 305 6565
Web: www.qviclub.com

Citin Garden Resort, Pattaya

Located on the South Pattaya Road, Citin Garden Resort is close to downtown Pattaya city, an area surrounded by a variety of entertainment and shopping centers such as Central Festival Pattaya, Royal Garden Plaza, home to Ripley's Believe It or Not Museum, Walking Street and more.

These shopping centers along with Pattaya beach, are easily reached in only minutes by Citin Garden Resort's free tuk-tuk shuttle service, making this Pattaya resort the ideal location.



Unit Size/Max Occupancy:

Hotel Unit / 2



Unit Amenities:

- Balcony
- Coffee/tea making facilities
- Flat-screen satellite TV
- Mini bar
- Safe
- Wifi internet access



Resort Facilities:

- Kids' pool
- Laundry services
- Massage services
- Meeting facilities
- Outdoor swimming pool with jacuzzi
- Tropical garden



Area Facilities:

- Beach and water sports activities
- Ripley's Believe It or Not Museum
- Shopping
- Theme parks
- Walking Street



Check-in: 2pm
Check-out: 12pm

Nearest Airport: Suvarnabhumi Airport
Address: 148/232 South Pattaya Soi 2, South Pattaya Road, Pattaya, Chonburi, 20150, Thailand
Tel: +66 38 374 747
Web: www.qviclub.com

Citin Loft Pattaya, Pattaya

Citin Loft Pattaya, is a 54-room sparkling new hotel of modern ideas and design combined with comfort and charm. Nestled in a residential neighbourhood in the heart of downtown Pattaya, it is a leisurely 15 minute walk to the beach and waterfront promenade. Also within walking distance of Citin Loft is a conglomeration of ethnic restaurants featuring everything from Italian pasta, French cuisine to local Thai favourites. Or wander to one of the upscale new shopping malls such as the Central Festival Pattaya Beach or Royal Garden Plaza.



Unit Size/Max Occupancy:

Hotel Unit / 2



Unit Amenities:

- Balcony
- Coffee/tea making facilities
- DVD player
- Flat-screen satellite TV
- Hairdryer
- Mini bar
- Safe
- Wifi internet access



Resort Facilities:

- Free wifi internet access
- Jacuzzi tub
- Laundry services
- Swimming pool



Area Facilities:

- Beach and water sports activities
- Ripley's Believe It or Not Museum
- Shopping
- Theme parks
- Walking Street



Check-in: 2pm
Check-out: 12pm

Nearest Airport: Suvarnabhumi Airport
Address: 177/3 Moo 9 Nongprue, Pattaya Klang Soi 12, Pattaya, Chonburi 20150, Thailand
Tel: +66 3848 9499
Web: www.qviclub.com

Citadines Sukhumvit 8, Bangkok

Located in one of the city's central yet tranquil residential areas, Citadines Sukhumvit 8 Bangkok puts you in the centre of the city action. A convenient location with easy access to Nana BTS skytrain station, close to shopping malls and markets, surrounded by a vast array of cosmopolitan restaurants, nightclubs, entertainment areas, trendy cafes and parks, this stylish serviced residence is truly convenient for all travellers wishing to explore the exotic city of Bangkok.



Unit Size/Max Occupancy:

1 Bedroom / 4
Studio Unit / 2



Unit Amenities:

- Cable TV
- Complimentary WiFi Internet
- Fully-equipped kitchen
- Hair dryer
- In-room safe
- Iron & ironing board



Resort Facilities:

- 24-hour reception
- Business corner
- Gym
- Swimming pool
- WiFi zone(s)



Area Facilities:

- Emporium Shopping Centre
- Foodland Supermarket
- Nana Skytrain Station
- Robinson Department Store
- Villa market



Check-in: 2pm
Check-out: 10am

Nearest Airport: Suvarnabhumi Airport
Address: 77/7 Sukhumvit 8, Sukhumvit Road, Klongtoey, Bangkok 10110, Thailand
Tel: +662 257 2277
Web: www.qviclub.com

Caribbean World Mahdia Hotel, Mahdia

This superb beachfront hotel is located alongside turquoise blue waters and welcomes you with a vibrant atmosphere, friendly smiles and warm hospitality. The brightly coloured décor reflects the Caribbean spirit and the wide range of activities will have you and your family fully engaged in all day fun! Start with a day of water sports and beach activities, then chill out by the pool or check out the nearby shops. Enrol in an aerobics or dance session, then relax in the wellness centre before indulging in a wonderful dinner and rounding off the evening in the disco.



Unit Size/Max Occupancy:

Hotel Unit / 2 - 4



Unit Amenities:

- Air-conditioning (from 15th June to 15th September)
- Bathroom with separate WC
- Hair dryer
- Mini bar
- Satellite TV
- Telephone



Resort Facilities:

- Aquabar
- Aqua-park
- Children games area
- Disco
- Football field (35m x 25m)
- Hair dresser
- Handcraft shops
- Laundry service
- Outdoor amphitheatre
- Safe deposit box (chargeable)
- Swimming pool with child pool
- Theatre & stage entertainment
- Wellness centre



Area Facilities:

- Aerobics and aqua aerobics
- Beach / Beach activities
- Boccia / archery / darts
- Diving Centre / wind surfing, canoeing / motorised watersports
- Evening games / cabarets / sketches
- Gymnastics / dance course
- Mini-golf
- Outdoor and indoor fitness areas
- Tennis / Ping-Pong
- Water-polo



Check-in: 2pm
Check-out: 12pm

Nearest Airport: Monastir Airport (MIR) - 45 km
Address: BP 196 Zone Touristique 5110 Mahdia, Tunisia
Tel: +216 73 682 400 / 147
Web: www.qviclub.com

Caribbean World Monastir Hotel, Monastir

The Caribbean World Monastir is a self-contained holiday village overlooking the sapphire blue Mediterranean Sea in exotic Tunisia, it is a 23 hectare recreational area with gorgeous flowering gardens along a beautiful beach. The resort is designed in a Moorish style and offers traditional Tunisian hospitality, delicious food and a host of relaxing facilities. An ideal haven for both couples and families where you can relax and explore countless attractions such as the Ribat in Sousse, situated 10kms away, or indulge in a game of golf at a superb 27-hole course just a few minutes away.



Unit Size/Max Occupancy:

Hotel Unit / 2 - 4



Unit Amenities:

- Air-conditioning (heat & cold)
- Balcony or terrace
- Hairdryer
- Private bathroom
- Safety box (chargeable)
- Satellite TV
- Telephone



Resort Facilities:

- Amphitheatres
- Aqua Park: seawater swimming pool with giant toboggan and waterfalls
- Baby sitter (chargeable)
- Disco / TV room
- Games area for children
- Handcraft shops
- Laundry
- Luggage storage
- Private parking
- Wellness and Beauty centre



Area Facilities:

- Aerobics, aqua aerobics, stretching, outdoor gymnastics
- Beach
- Beach and water volleyball
- Boccia, archery / darts / mini-golf / tennis
- Dance course
- Evening games / cabarets / sketches
- Ping-Pong
- Water polo



Check-in: 2pm
Check-out: 12pm

Nearest Airport: Skanes-Monastir Airport (MIR) - 6km
Address: Zone Touristique Dkhila B.P.5, Sahline 5012 Monastir, Tunisia
Tel: +216 73 524 128 / 129
Web: www.qviclub.com

Caribbean World Nabeul Hotel, Nabeul

Caribbean World Nabeul is located 1km from the centre of Nabeul, a city famed for its camel trading, as well as its pottery and ceramics. The resort will charm you with its location in the heart of a sunny 4-hectare park, glowing with flowers of orange, lemon and mimosa, overlooking a brilliant blue sea and white sandy beach. Large swimming pools, surrounded by sun-loungers, invite you to bask in the warmth. Activities are organized daily to entertain everyone in the family. If you prefer quieter pursuits, take a stroll out to nearby shops for a leisurely browse.



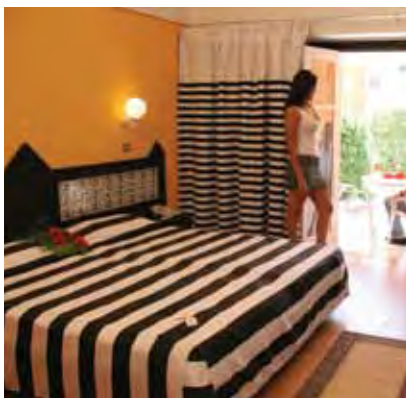
Unit Size/Max Occupancy:

Hotel Unit / 2 - 4



Unit Amenities:

- Air-conditioning
- Bathroom with bath or shower
- Hairdryer
- Heating
- Satellite TV
- Telephone



Resort Facilities:

- Aqua park with integrated children's pool
- Diving centre
- Fitness Room / Mini-club / Theatre
- Laundry
- Pool
- Restaurants and bars
- Safe deposit box (chargeable)
- Shops / Hair salon
- Wellness Centre



Area Facilities:

- Aerobics, jogging, dance course
- Aqua aerobics, water polo
- Beach / watersports
- Evening games, sketches
- Excursions
- Ping pong / boccia / archery / darts / video games / snooker
- Soccer / tennis / volleyball / mini-golf / archery
- Shop and supermarket



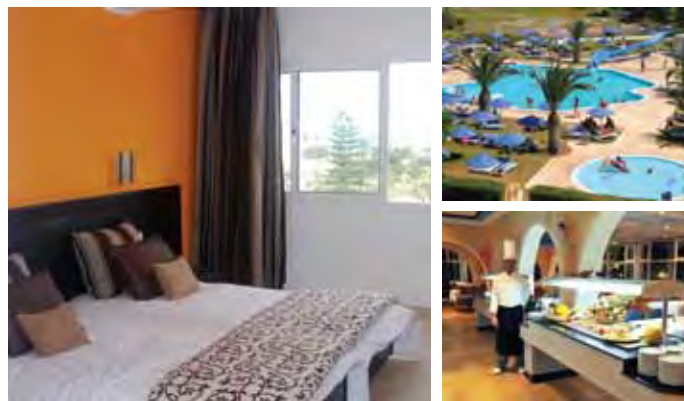
Check-in: 2pm
Check-out: 12pm

Nearest Airport: Tunis International Airport (TUN) - 60km
Address: B.P.194 - 8000 Nabeul, Tunisia
Tel: +216 72 286 111
Web: www.qviclub.com

Caribbean World Venus Beach, Hammamet

The Caribbean World Venus Beach is located along an enchanting sandy beach, just 7km from Hammamet town centre and only an hour's drive from the major airports of Tunis and Monastir.

The resort has a bright and welcoming exotic lobby which will make you feel instantly at home. Situated on its own private beach, the hotel offers traditional Tunisian hospitality, great food and a host of facilities designed to keep everyone entertained.



Unit Size/Max Occupancy:

Hotel Unit / 2 - 4



Unit Amenities:

- Air conditioning (15 June – 15 September)
- Balcony or terrace
- Bathroom
- Central heating
- Hairdryer
- Satellite TV
- Telephone



Resort Facilities:

- Amphitheatre for evening shows
- Car rental
- Doctor on call service
- Fitness centre
- Hair Salon
- Handicraft boutiques
- Laundry
- Pool / kids pool
- Sports area
- Stage for open air animations



Area Facilities:

- Aerobics / aqua gym
- Archery / darts
- Beach
- Beach volleyball / table tennis
- Gym club
- Mini football pitch
- Shows / cabarets / sketches, live music
- Tennis
- Water polo
- Watersports



Check-in: 2pm
Check-out: 12pm

Nearest Airport: Tunis-Carthage Airport (TUN) - 70km

Address: Zone Touristique 8050 Hammamet - Tunisia

Tel: +216 72 22 72 11

Web: www.qviclub.com

Tuscana Champions Gate, Orlando, Florida

Located in the heart of Orlando, Florida USA, Tuscana Champions Gate is at the centre of a large variety of activities. From Disneyworld, Universal Studios, Epcot Center, Sea World, golfing, surfing, shopping and lots more, Tuscana Champions Gate guarantees you and your family the best best vacation of your lives.



Unit Size/Max Occupancy:

2 Bedroom / 6



Unit Amenities:

- Free wired internet access
- Fully fitted kitchen
- TV
- Washer & dryer



Resort Facilities:

- Business center
- DVD rentals
- Fitness center
- Heated swimming pool
- Jacuzzi
- 25 seat movie theatre
- Private spa services
- Tuscana club house
- Tuscana tavern bar & restaurant



Area Facilities:

- Cirque du Soleil
- Disney World
- Disney Animal Kingdom
- Epcot Center
- Kennedy Space Center
- Legoland
- Ripley's Believe It or Not Museum
- Sea World
- Universal Studio
- Wet n Wild Theme Park



Check-in: 4pm
Saturday
Check-out: 11am
Saturday

Address: 1395, Tuscana Lane, Champions Gate, Florida, 33896, USA

Tel: +1 877 448 8722

Web: www.qviclub.com



Get the points!

It's finally here! The most exciting new holiday product from QVI!

QVI Points opens up a fantastic new world of travel, lifestyle and vacation options for you. This easy-to-use holiday redemption product lets you customise your holiday - choose where and when you want to go, what you want to see and do, then redeem your choices with pre-paid Points, and receive instant confirmation on your reservations. Quick weekend getaway? Long family vacation? Relaxing cruise? Road trip by car? Easy! It's all at your fingertips!

On top of that, when you make your first QVI Points purchase, you'll receive an amazing range of benefits that include free accommodation, as well as numerous other discounts and offers all designed to enhance your holiday enjoyment!

Sounds incredible? Go check out QVI Points yourself now at www.qvipoints.com!



EXCLUSIVE BOUTIQUE COLLECTION

XchangeWorld now brings you a new category of resorts for those who want a more special, intimate holiday experience. The Exclusive Boutique Collection features smaller elegant resorts that focus on discreet, superlative service and utmost privacy. Perfect getaways for romantic occasions or for celebrating anniversaries, these exquisitely designed resorts are set in some of the most beautiful, desirable locations.

Tamarind Hill, Galle

This sprawling manor, built in the 1800s by a prominent family in the Galle district, was first occupied by a British Admiral and later by a High Court judge of the colonial era. Tamarind Hill was carefully refurbished, preserving the intricate details and style of a by-gone era - all the extensions and alterations to the property have been beautifully blended with the original main house, in keeping with the architecture and restoring it to its grand origins.



Unit Size/Max Occupancy:

Hotel Unit / 2



Unit Amenities:

- Plasma screen TV/ DVD player / Cable TV
- Private garden terrace for each room
- Safety deposit box



Resort Facilities:

- DVD & book library
- Infinity swimming pool
- Internet access
- Laundry service



Area Facilities:

- Diving & deep sea fishing
- Sea swimming / snorkeling at the Jungle beach
- Sinharajah Rain Forest (UNESCO World Heritage Site)
- UNESCO World Heritage Site Galle Fort
- Whale watching



Check-in: 1pm
Check-out: 11am

Address: #288 Dadella Galle, Sri Lanka
Tel: +65 6491 0900
Web: www.xchangeworld.com

The Park Street Hotel, Colombo

Once the home of a colourful and eccentric couple who were members of Colombo's 'elite', this venerable colonial bungalow with adjoining stores and warehouses occupying 2 acres of land in the heart of Colombo, has now been transformed into an elegant 12-room boutique hotel.



Unit Size/Max Occupancy:

Hotel Unit / 2



Unit Amenities:

- Plasma screen Cable TV with DVD player and Audio system
- Private terrace
- Safe deposit



Resort Facilities:

- Complimentary high tea
- Fully equipped meeting room
- Gymnasium
- Internet access
- Library with books, DVD and board games
- Swimming pool
- Private function areas



Area Facilities:

- Dutch Museum
- Golf
- National Museum
- Shopping



Check-in: 1pm
Check-out: 11am

Nearest Airport: Colombo airport (45mins)
Address: #20 Park St. Colombo 2, Sri Lanka
Tel: +65 6491 0900
Web: www.xchangeworld.com



XchangeWorld is an international holiday exchange network featuring direct partnerships with meticulously selected quality clubs and resorts – exclusively for QV Club members. XchangeWorld is a benefit with QVI Club membership purchase and covers the whole duration of your membership.

XCHANGEWORLD

Bellbrae Country Club, Victoria

Set on 33 acres and nestled amongst picturesque rolling hills overlooking Torquay, Bellbrae Country Club is surrounded on all sides by farmland and native bush. It is just over 97km from Melbourne. Nearby Torquay is the home of Australia's famous surf beach - Bells Beach, where the annual Easter Classic is held. It is also the birth place of some of Australia's iconic clothing brands including Billabong, Quiksilver and Roxy. The most famous stretch of roadway in Australia, The Great Ocean Road, starts here, hugging the southern coastline of Victoria and passing through towns such as Anglesea, Lorne, Apollo Bay, Port Campbell, Warrnambool and Port Fairy, terminating in Portland.



Unit Size/Max Occupancy:

1 Bedroom / 4



Unit Amenities:

- Clothes Dryer (Some)
- Dishwasher
- DVD Player
- Full Kitchen
- Hairdryer
- Split Heater / Air-Conditioner
- Washing Machine (Some)



Resort Facilities:

- Adults Lounge with open fire
- Basketball ring / tennis court
- BBQ area
- Children's playground
- Games room
- Indoor heated pool & spa
- Masseuse
- Miniature animal farm & aviary



Area Facilities:

- Beach
- Bush & beach walks
- Cafes
- Fishing
- Golf
- Great Ocean Road
- Horse riding
- Surf Museum
- Surfing
- Tiger Moth joy flights



Check-in: 4pm
Check-out: 10am

Nearest Airport: Melbourne Airport - 100km
Address: 10 Woodacres Road, Bellbrae, VIC, 3228
Tel: +61 35261 5167
Web: www.xchangeworld.com

Cedar Lake Country Resort, Queensland

Cedar Lake Country Resort offers the perfect holiday experience - from the peace and tranquillity of nature and native wildlife, to the action packed fun of the Gold Coast's major attractions. Cedar Lake Country Resort is situated on 89 acres of bushland in the picturesque Gold Coast Hinterland, only 10 km from Nerang and 30 minutes from the excitement of Australia's holiday capital, Surfers Paradise. The resort offers spacious fully self-contained two bedroom apartments.



Unit Size/Max Occupancy:

2 Bedroom / 6



Unit Amenities:

- Cooking facilities
- Dishwasher
- DVD player
- Television



Resort Facilities:

- Bar / cocktail lounge
- Clubhouse
- Golf
- Grocery / convenience store
- Lake
- Laundry facilities
- Outdoor swimming pool
- Restaurant
- Sauna / steam room
- Tennis
- Whirlpool spa / hot tub



Area Facilities:

- Australian Outback Spectacular
- Conrad Jupiters Casino
- Cycling / horseback riding
- Boating / fishing / sailing
- Dreamworld / Movieworld / Seaworld / Wet "n" Wild
- Gold Coast Hinterland
- Golf
- Mt. Nathan Winery
- Mt. Tamborine
- Pacific Fair / Broadbeach



Check-in: 4pm
Check-out: 10am

Nearest Airport: Coolangatta Airport - 35km
Address: 555 Nerang-Murwillumbah Road, Advancetown
Tel: +61 7 5533 2255
Web: www.xchangeworld.com

Lakeside Country Club, Victoria

Located 240km north of Melbourne and just 25km from Shepparton, Lakeside Country Club is set in the semi-rural outskirts of the township of Numurkah. Known as the southern gateway to the Murray River, the area enjoys one of the finest temperate climates Australia has to offer.

The resort is set on 65 acres of expansive grounds and features well-appointed single storey villas with modern facilities and a great on-site activities programme providing fun for all ages. A short drive from the resort are award winning wineries, local produce outlets growing or producing strawberries, milk and cheese, fruits and vegetables, buffalo meat and more!



Unit Size/Max Occupancy:

1 Bedroom / 4



Unit Amenities:

- Clothes Dryer
- Dishwasher
- DVD Player
- Full Kitchen
- Hairdryer
- Split Heater / Air-Conditioner
- Washing Machine



Resort Facilities:

- Adult lounge
- BMX bike track
- Children's wading pool
- Games room
- Golf driving range / mini golf
- Heated indoor pool
- Kids playroom
- Spa / sauna
- Squash / raquetball / tennis



Area Facilities:

- Canoeing
- Dairy farm / farm produce
- Fishing on the lake
- * Four-wheel driving
- Golf
- Horse riding
- River cruise
- Wineries



Check-in: 4pm
Check-out: 10am

Nearest Airport: Melbourne Airport - 230km
Address: Wattle Drive, Numurkah, VIC, 3636
Tel: +61 35862 2077
Web: www.xchangeworld.com

Tamarind Sands, New South Wales

Tamarind Sands is set on about one acre of lush tropical grounds in the delightful little coastal town of Cabarita renowned for its excellent surfing beach. A small but well equipped shopping centre with takeaway food, restaurants, beachside hotel, supermarket, surf and fishing needs will supply you with the necessities of life whilst you enjoy the relaxed atmosphere of the surrounding town. The original name for this pretty little town is Bogangar, an Aboriginal word meaning 'place of many pippies', which refers to the ancient ceremonial shell middens in the area.



Unit Size/Max Occupancy:

1 Bedroom / 4



Unit Amenities:

- Clothes Dryer
- Convection / microwave oven
- Dishwasher
- DVD player
- Full kitchen
- Hairdryer
- Overhead fans
- Phones
- Split heater / air-conditioner
- Television
- Washing machine



Resort Facilities:

- BBQ areas
- Games room
- Members lounge
- Mini golf
- Outdoor solar heated pool
- Outdoor spa
- Playground
- Tennis court



Area Facilities:

- Beach
- Bowls Club
- Byron Bay
- Currumbinsanctuary
- Fishing
- Fruit World
- Golf
- Kingscliff
- Mt. Warning
- Restaurant
- Surfer's Paradise
- Theme parks



Check-in: 4pm
Friday
Check-out: 10am

Nearest Airport: Coolangatta Airport - 26km
Address: 49 Tamarind Avenue, Cabarita Beach, NSW, 2488
Tel: +61 2 6676 3255
Web: www.xchangeworld.com

Club La Costa Alpine Centre, Salzburg

In the midst of beautiful Alpine scenery, Club La Costa Alpine Centre is the ideal holiday choice. Situated between Saalfelden and Zell am See, this resort is well placed for exploring, with the following sightseeing trips being among the most popular: Salzburg, Krimml Waterfall, the sophisticated walled town of Kitzbuehel, Grossglockner High Alpen Pass (Austria's highest mountain at 3,797 metres), Eisriesenwelt (the world's most impressive ice cave), the Kapruner reservoirs, the casino and the salt mines at Bad Reichenhall. Winter sports enthusiasts will be spoilt for choice, whether first time skiers or proven black slope veterans.



Unit Size/Max Occupancy:

1 Bedroom / 4



Unit Amenities:

- Balcony/terrace
- Cable TV
- CD player
- Full kitchen
- Hairdryer
- Heating
- Iron/ironing board
- Radio
- Safe
- Telephone



Resort Facilities:

- Bicycle hire
- DVD rental
- Gym/Health Club
- Indoor swimming pool
- Laundry
- Parking
- Restaurant
- Sauna
- Solarium
- Table tennis



Area Facilities:

- Alpine Therme Gastein
- Caving / Eisriesenwelt
- Dachstein Ice Palace
- Fishing / golf / mini golf / tennis
- Grossglockner Alpen Pass
- Hiking / horseback riding / sleigh
- Kayaking / rafting
- Krimml Falls
- Paragliding
- Skiing / snowboarding / tobogganing
- Sound Of Music Film Locations
- Swarovski Crystal World



Check-in: 4pm
Check-out: 10am

Nearest Airport: Salzburg (64 km)
Address: Harham 46 Saalfelden 5760 Austria, Saalfelden Austria
Tel: +43 6582 75201
Web: www.xchangeworld.com

Grand Palladium Imbassai Resort & Spa, Imbassai

The resort is located within the Imbassai nature reserve, alongside the sea from the 'Costa dos Cocqueiros' and home to the river that gives it its name. The pristine beaches, dunes and protected environment make it a truly unique setting for your vacation. Its design reflects a perfect harmony between modern and luxurious facilities of a first class resort and the beautiful, natural environment of coconut groves and rivers characteristic of the 'Green Line' coast of the region. The complex also features an ultramodern Spa which is equipped with the most advanced facilities and offers guests a wide variety of therapies and services.



Unit Size/Max Occupancy:

Hotel Unit / 2



Unit Amenities:

- Air-conditioning
- Satellite TV
- Telephone
- Electronic safe
- Hair dryer
- Tea and coffee making facilities
- Iron and ironing board
- Bathrobes and slippers
- Ceiling fan
- Minibar
- iPod station



Resort Facilities:

- Air-conditioning
- Satellite TV
- Electronic safe
- Hair dryer
- Tea and coffee making facilities
- Iron and ironing board
- Minibar
- iPod station



Area Facilities:

- Pool
- Beach
- Aqua gym
- Aerobics
- Table tennis
- Ball games
- Racket games



Check-in: 2pm
Check-out: 12pm

Nearest Airport: Salvador Airport – 45 km
Address: Rodovia BA 099, km 65, Linha Verde, Condominio Reserva Imbassai CEP: 48280, Brazil
Tel: +55 11 3082-5651
Web: www.xchangeworld.com

Absolute @ JinQiao International Garden Beijing

Ideally located in the heart of thriving Beijing, adjacent to the World Heritage The Temple of Heaven, and in the commercial circle of Oriental Plaza and China World Trade Center, Absolute @ Jin Qiao International Gardens provides the perfect setting from which to explore this historical city.

There is an extensive range of resort amenities for your comfort and convenience which includes restaurants and bars with live entertainment and a fully equipped gym.



Unit Size/Max Occupancy:

1 Bedroom / 2



Unit Amenities:

- Air-conditioning
- Hot-water system
- Central heating
- Telephone
- Satellite TV
- DVD player and mini sound system
- Refrigerator
- Microwave oven
- Toaster
- Hairdryer
- Safe deposit box
- Iron and ironing board



Resort Facilities:

- 24 hour ATM banking
- Bar and cocktail lounge
- Car wash facilities
- Live entertainment
- Equipped exercise room
- Convenience store
- Laundry services
- Photo printing
- Restaurant
- Shoe repair
- Video/bookshop
- Watch store



Area Facilities:

- Sightseeing
- Shopping
- Golf
- Hiking
- Opera/ballet
- Skiing and snow boarding
- Auto rental
- Horseback riding
- Bicycling



Check-in: 2pm
Saturday
Check-out: 12pm
Saturday

Nearest Airport: Beijing International Airport, approximately 16km
Address: No. 55, Guangqumen Beili, Chongwen District Beijing 100062 China
Tel: +65 6491 0900
Web: www.xchangeworld.com

Crown Spa Resort, Hainan

Crown Spa Resort Hainan, an international hotel-spa-resort has both natural hot spring and private beach, covers a ground area of 100,000 square meters. It has more than 333 rooms, an independent Convention Center covering a building area of 6400m² and Crown Lotus Spa Center covering a building area of 6200m². It boasts of its private beach of more than 1,000 meters.



Unit Size/Max Occupancy:

Hotel Unit / 2



Unit Amenities:

- Individual air-conditioning
- Satellite TV
- Broadband system for internet connection
- In-room safe,
- Mini bar,
- Hair dryer,
- Bathtub,
- Coffee & tea making facilities



Resort Facilities:

- Convention Center
- Guinness World Recorded Spa,
- Private Beach
- Restaurant



Area Facilities:

- Wugong Temple
- The Red Forest Nature Reserve
- Haikou Volcano Park



Check-in: 3pm
Check-out: 12pm

Nearest Airport: Meilan International Airport
Address: No. 1 Qiong Shan Ave. East Riverside Haikou Hainan 571100 China
Tel: +86 898 6596 66888
Web: www.xchangeworld.com

Shanghai Manhattan Bund Business Hotel, Shanghai

Manhattan Bund Business Hotel is located at "Bund Origin" which is the most prosperous golden district of Shanghai, transformed from a classical European-style building with seven floors established in 1972. The interior decoration and design is elegant and warm, embodying the lasting appeal of old Shanghai in the 1930s. The high quality bath robe and slippers enable each guest to feel warm and comfortable just like at his/her own home.



Unit Size/Max Occupancy:

Hotel Unit / 2



Unit Amenities:

- Television
- Safe
- Tea & Coffee making facilities
- Hairdryer



Resort Facilities:

- Restaurant
- Hairdresser
- Business Centre
- Beauty Salon
- Laundry
- Conference room
- Currency Exchange



Area Facilities:

- New International Exhibition Center – China Pavilion
- Shanghai Science & Technology Museum
- People's Square
- Lujiazui Finance and Trade Zone
- Old City's God Temple



Check-in: 4pm
Check-out: 12pm

Nearest Airport: Shanghai Pudong Airport (Approximately 45km away)
Address: No. 81-86, Dian Chi Street, Huang Pu DIST., Shanghai Province, China
Tel: +603 7949 8288
Web: www.xchangeworld.com

Grand Palladium Punta Cana Resort & Spa

The resort is situated on the Playa de Bavaro, 1 km from the Plaza Bavaro, and surrounded by a coconut plantation and lush tropical vegetation. Its sprawling grounds are a tropical haven of sun-dappled pathways meandering through swaying palms, gorgeous free-form pools, and thatched pavilions where you can relax and drink in the coastal scenery.

Guests are free to use the facilities of the nearby Grand Palladium Palace Resort, Spa & Casino and the Grand Palladium Bavaro Resort & Spa.



Unit Size/Max Occupancy:

Hotel Unit / 2



Unit Amenities:

- Satellite TV
- Electronic safe
- Hair dryer
- Tea and coffee making facilities
- Iron and ironing board
- Balcony or terrace



Resort Facilities:

- 13 restaurants
- Bars
- Swimming pools
- Spa
- Games and activities by the pool and on the beach
- Night entertainment
- Free Wi-Fi at the hotel lobby
- Car rental
- Bicycle rental service



Area Facilities:

- Water gym
- Table tennis
- Ball games
- Racket games
- Water polo
- Archery
- Rifle shooting
- Darts
- Aerobics



Check-in: 2pm
Check-out: 12pm

Nearest Airport: Punta Cana Airport (Approximately 20km away)
Address: Playas de Bavaro, El Cortecito, Dominican Republic
Tel: +001 809 221 0719
Web: www.xchangeworld.com

Dreams Beach Marsa Alam

Dreams Beach Marsa Alam is spread along 600m of private beachfront property on the northern sharm of Al Quseir City. Located approximately 35 kilometres from Marsa Alam International Airport, the resort sits in lush greenery, with nearly 90% of its land area given over to gardens and green spaces. It is an ideal resort for families, with plenty of activities and entertainment for both children and adults to enjoy and explore.



Unit Size/Max Occupancy:

Hotel Unit / 2



Unit Amenities:

- Bathtub
- Hair dryer
- Mini bar
- Private balcony / terrace
- Safe box
- Satellite TVs



Resort Facilities:

- Amphitheatre
- Children's playground
- Discotheque
- Diving centre
- Internet cafe
- Private beach
- Spa
- 9 swimming pools
- Tennis courts
- Volleyball courts



Area Facilities:

- Al Quseir Historic City
- Diving / snorkelling
- Excursion to Luxor
- Fishing / kite surfing
- Wadi El Gemal National Park



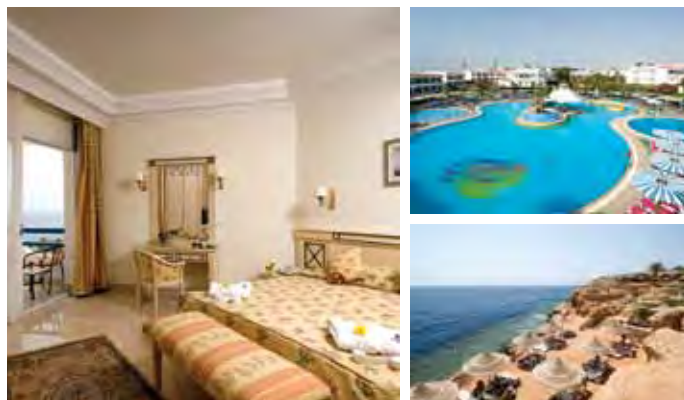
Check-in: 2pm
Check-out: 12pm

Nearest Airport: Marsa Alam International Airport (35km)
Address: Marsa Alam, Al Qusier - Egypt
Tel: +206 533 95000 / 4
Web: www.xchangeworld.com

Dreams Beach Sharm El Sheikh

Blessed with a unique topography and geographical location, Dreams Beach Sharm El Sheikh sits on 100,000m² of land area. The resort features a 400-metre long coastline at Ras Um El Side Cliff and borders crystal clear waters of the renowned Red Sea.

In addition, the resort is located only 30 kilometres from Ras Muhammad National Park, 15 km from Sharm El Sheikh International Airport and 7 kilometres from Naama Bay.



Unit Size/Max Occupancy:

Hotel Unit / 2



Unit Amenities:

- Bathtub
- Hair dryer
- Mini bar
- Private balcony / terrace
- Safe box
- Satellite TVs



Resort Facilities:

- Amphitheatre
- Children's playground
- Discotheque
- Football courts
- Internet cafe
- Kid's club
- Meeting Facilities
- Private Beach
- Spa
- 5 swimming pools
- Tennis courts
- Volleyball courts



Area Facilities:

- Diving / snorkelling
- Fishing / kite surfing
- Parasailing, boating & canoeing
- Ras Muhammed National Park



Check-in: 2pm
Check-out: 12pm

Nearest Airport: Sharm El Sheikh International Airport (23km)
Address: Um El Sid Cliff, Sharm El Sheikh, South Sinai - Egypt
Tel: +2 069 3660 170 - 179
Web: www.xchangeworld.com

Dreams Vacation Sharm El Sheikh

Dreams Vacation Sharm El Sheikh sits on an area of 40,000m² of unspoilt grounds with a marvellous and distinguished location in the heart of the beautiful Um El Sid Cliff. Similar to its sister property, Dreams Beach Sharm El Sheikh, the resort is located only 30 kilometres from Ras Muhammad National Park, 15 km from Sharm El Sheikh International Airport and 7 kilometres from Naama Bay.



Unit Size/Max Occupancy:

Hotel Unit / 2



Unit Amenities:

- Bathtub
- Hair dryer
- Mini bar
- Private balcony / terrace
- Safe box
- Satellite TVs



Resort Facilities:

- Amphitheatre
- Billiards / table tennis
- Children's playground
- Mini-football courts
- Internet cafe
- 5 swimming pools
- Volleyball courts



Area Facilities:

- Diving / snorkelling
- Fishing / kite surfing
- Parasailing, boating & canoeing

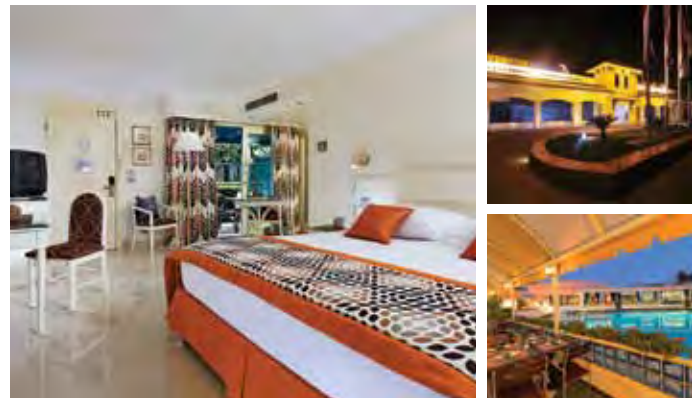


Check-in: 2pm
Check-out: 12pm

Nearest Airport: Sharm El Sheikh International Airport (23km)
Address: Um El Sid Cliff, Sharm El Sheikh South Sinai, Egypt
Tel: +2 069 3660 170 - 179
Web: www.xchangeworld.com

Mövenpick Resort Cairo - Pyramids

Just a short distance from Giza, the Mövenpick Resort Cairo-Pyramids stands at the foot of the Pyramids within a setting of lush gardens. The hotel's bars and restaurants offer a wide variety of the best cuisines from around the world, all prepared by their chefs with the freshest ingredients and meticulous attention to detail.



Unit Size/Max Occupancy:

Hotel Unit / 2



Unit Amenities:

- Balcony / Lanai / Terrace
- Safe deposit
- Wireless internet connection



Resort Facilities:

- Children's playground
- Fitness centre
- Jacuzzi
- Massage
- Mini golf
- Restaurants and Bars
- Sauna
- Swimming pool



Area Facilities:

- Cairo City Centre
- Giza Pyramids
- Saqqara
- Scuba diving

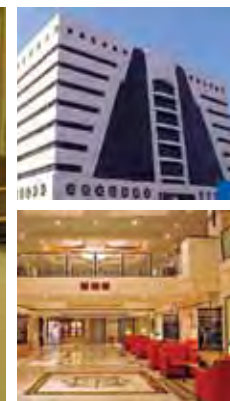


Check-in: 2pm
Check-out: 12pm

Nearest Airport: Cairo International Airport (35km)
Address: Alexandria Road, Pyramids PO. Box 1, Giza, Egypt
Tel: +2 023 3772 555
Web: www.xchangeworld.com

Aditya Park, Hyderabad, Andhra Pradesh

A premium property from the well-known Sarovar chain of hotels, Aditya Park welcomes you to everything luxurious that comes with the convenience of being close to the major areas in town. A well-chosen location keeps you within easy reach from the airport and railway station as well as the IT hub in the city



Unit Size/Max Occupancy:

Superior Room / 2 Adults

In case of extra bed, extra bed charges apply.



Unit Amenities:

- Room Service
- Tea/Coffee Maker
- Work Desk
- Self Deposit Locker
- LCD Television
- Wi-Fi
- Direct Dialling Telephone
- Wheel-Chair Accessibility Room



Resort Facilities:

- Business Centre
- Travel Desk
- Restaurant
- Banquet Hall
- Gymnasium
- 24 Hour Coffee Shop
- Conference Facilities
- 24 Hour Front Desk



Area Facilities:

- Charminar Building
- Golkonda Fort
- Nizam's Museum

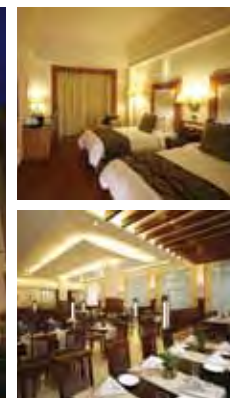


Check-in: 12pm
Check-out: 12pm

Nearest Airport: Rajiv Gandhi International Airport
Address: Aditya Trade Centre, Ameerpet, Hyderabad Andhra Pradesh 500 038 India
Tel: +91 40 66788888
Web: www.sarovarhotels.com

Ambrosia Sarovar Portico, Haridwar, Uttarakhand

The hotel has 70 elegantly designed guest rooms strategically located – 10 Kms from IIT, 10 Kms from SIDCUL, 01 Km from Baba Ramdev Patanjali Yogpeeth and adjacent to Water park. It offers most modern guest amenities and special care has also been taken for the physically challenged in rooms and all accessible guest areas. Other facilities include travel desk, in-house laundry service, on-call doctor, valet parking, jogging track to the name the few. When it comes to planning meetings and events, the hotel's experience will ensure your function is flawless. It can cater anything from a small group of 15 persons conferencing to a large party of 600 persons banqueting along with exclusive layouts, and also equipped with gadgets to make your function a resounding success.



Unit Size/Max Occupancy:

Superior Room / 2 Adults

In case of extra bed, extra bed charges apply.



Unit Amenities:

- Satellite TV
- Minibar
- Tea / Coffee Maker
- Electronic Safe
- Wi-Fi



Resort Facilities:

- Fitness Centre
- Currency Exchange
- Souvenir Shop
- Drivers Dormitory
- Spa & Saloon
- Kids Zone
- Indoor Games
- Outdoor Games at the Lawn
- Library



Area Facilities:

- Religious Temples & Mosque - Chandi Devi and Mansa Devi
- Crystal World Water Park
- Rajaji National Park
- Yoga & Medicine – Babaram Dev Pathanjali Ashram



Check-in: 12pm
Check-out: 12pm

Nearest Airport: Jolly Grant Airport
Address: Haridwar NH-58, 12th Milestone, Bادهري, Rajputna, Haridwar Uttarakhand 249 401
Tel: +91 1334 398400
Web: www.sarovarhotels.com

Citrus Chambers, Mahabaleshwar

Mahabaleshwar, the picturesque hill station, also known as 'Queen of Maharashtra', has been charismatic in hauling hordes of holidaymakers who are nature junkies and are tired of their customary life. Located at 4500 Ft above sea level, it is blessed with steep valleys, a crown of yummy and juicy strawberry plantations over 1500 acres of land, cascading beautiful waterfalls and almost 30 designated sight seeing locations.



Unit Size/Max Occupancy:

Deluxe Room / 2 Adults



Unit Amenities:

- LCD Television with Cable Channels
- Direct Dialing Telephone
- Tea/Coffee Maker
- Minibar
- Air-Conditioning
- In-room Safe



Resort Facilities:

- Swimming Pool
- Spa
- Kids Play Zone
- Amphi Theatre
- Airport Transfers
- Valet Parking
- Business Service
- Wireless Broadband Internet
- Audio / Video Equipments
- Fax Machine
- Laundry
- Iron and Ironing Board



Area Facilities:

- Lodwick Point
- Elphinstone Point
- Sunrise Point
- Lingmala Waterfall
- Arthur's Seat
- Tiger's Spring



Check-in: 12pm
Check-out: 10am

Nearest Airport: Lohegaon Airport, Pune (Approximately 135km away)
Address: L.C. Dsouza Road, Mahabaleshwar, Maharashtra 412 806 India
Tel: +91 2168 260432
Web: www.citrushotels.com

Citrus Hotels, Goa

Located in the heart of action, Citrus Hotels is a beautiful boutique hotel, which brings a feeling of home away from home. A brief jaunt from the famous Calangute Palm fringed beach, The Citrus, Goa is just about 4 minutes from the beach. The boutique resort offers promises perfect holidays, not just outdoors as well as indoors, in Goa



Unit Size/Max Occupancy:

Deluxe Room / 2 Adults +
2 Children (below 10 years).

In case of extra bed, extra bed charges apply.



Unit Amenities:

- LCD Television with Cable Channels
- Direct Dialing Telephone
- Tea / Coffee Maker
- Minibar
- Air-Conditioning
- In-room Safe



Resort Facilities:

- Swimming Pool
- Spa
- Conference Room
- 24 Hours Restaurant
- Boat and Car Rental
- Wireless Broadband Internet
- Audio / Video Equipments
- Fax Machine
- Medical Services on Call



Area Facilities:

- Candolim
- Calangute High Street
- Panaji
- Mapusa
- Calangute Beach
- Baga Beach



Check-in: 2pm
Check-out: 12pm

Nearest Airport: Dambolin Airport, Goa (40km)
Address: Umtavado Calangute, Bardez, Goa 403516 India
Tel: +91 8932 3044444
Web: www.citrushotels.com

Citrus Hotels, Lonavala

Nestled on a particularly lush slope of Sahyadri, it will leave you gasping for superlatives. The crispness of the mountain air is matched only by the crispness of the service and the ambience. The calming tunes of chirping birds will be matched note by note by the mood box music in your room.



Unit Size/Max Occupancy:

Deluxe Room / 2 Adults



Unit Amenities:

- LCD Television with Cable Channels
- Direct Dialing Telephone
- Tea/Coffee Maker
- Wi-Fi
- Individual Air-Conditioning Unit
- In-room Safe



Resort Facilities:

- Wireless Broadband Internet
- Meeting Rooms
- 24 Hour Room Service
- Fax
- Laundry
- Audio / Video Equipments
- Photocopying
- Car Rental / Valet Parking
- Doctor on Call
- Game Room
- Kids Play Zone
- Home Theatre



Area Facilities:

- Bushi Dam
- Ryewood Park
- Tiger's Leap
- Karla Caves
- Tugrali Lake
- Lonavala Lake



Check-in: 12pm
Check-out: 10am

Nearest Airport: Lohegaon Airport, Pune (Approximately 64km away)
Address: D T Shahani Road, Near Telephone Exchange, Lonavala, Maharashtra 410 401 India
Tel: +91 2114 279531
Web: www.citrushotels.com

Citrus Retreat, Alleppey

Citrus Retreats Alleppey is located by the national waterways & is strategically placed across the banks of the Pallathuruthy river surrounded by lush greenery & paddy. The resort is well connected through waterways, rail, road and air.



Unit Size/Max Occupancy:

Deluxe Room with Paddy View
/ 2 Adults + 2 Children
(Below 10 years).

In case of extra bed, extra bed charges apply.



Unit Amenities:

- LCD Television with Cable Channels
- Direct Dialing Telephone
- Tea/Coffee Maker
- Minibar
- Air-Conditioning
- In-room Safe



Resort Facilities:

- Swimming Pool
- Spa
- Conference Room
- 24 Hours Restaurant
- Boat and Car Rental
- Wireless Broadband Internet
- Audio / Video Equipments
- Fax Machine
- Medical Services on Call



Area Facilities:

- Krishnapuram Palace
- Pathiramanal (An island)
- Amabalapuzha
- Punnpra
- Edathua Church
- Sea View Park



Check-in: 2pm
Check-out: 12pm

Nearest Airport: Nedumbassery Airport, Kochi (80km)
Address: 8 / 504A - 504N Karimba Valavu Punnpra North P.O., Paravoor Village, Alapuzha Kerala 688014 India
Tel: +91 477 2288611
Web: www.citrushotels.com

City Heart Sarovar Portico, Ludhiana, Punjab

The elegance and stateliness of the hotel reflects in everything the hotel presents to its guests. An impressive façade and welcoming interiors make each guest feel invited as they enter the hotel. All 49 rooms and suites offer the best of facilities and amenities to make for a perfectly relaxed stay. With an aim to provide the best hospitality, the hotel has a dedicated staff that ensures all your needs are met. Dining can also be a great pleasure with City Heart Sarovar Portico as some fine dining restaurants and bars are housed within the hotel serving the finest of cuisines and choicest of wines.



Unit Size/Max Occupancy:

Superior Room / 2 Adults

In case of extra bed, extra bed charges apply.



Unit Amenities:

- Centrally Air-Conditioning
- LCD Television with Satellite Channels
- Tea/Coffee Maker
- Mini Bar
- 24 Hour Room Service
- Electronic Safe
- Wi-Fi



Resort Facilities:

- Courier Service
- Currency Exchange
- Disabled Facilities
- Housekeeping
- Laundry Services
- Newspaper
- Parking
- Transport Service
- Valet Service
- Wake-Up Call Service
- Fitness Centre
- Business Centre



Area Facilities:

- Gurudwara Charan Kamal
- Pir-i-Dastgir
- Punjab Agricultural University Museum
- Bhir



Check-in: 12pm
Check-out: 12pm

Nearest Airport: Sahnewal Airport
Address: Badhor House, Near Clock Tower, Ludhiana 1410038 Punjab, India
Tel: +91 161 4377 000
Web: www.sarovarhotels.com

Country Inn Bhimtal, Uttarakhand

Country Inn Bhimtal is a wonderful blend of mellow light, a bit of wilderness, a myriad of stars and the peaceful sounds of silence. A relaxing place where you can be pampered by pleasant surroundings, fine cuisine and excellent service. The tasteful and magnificently designed sky lounge and sky terrace, with their perfect combination of lush green tropical plants, fountain and hillside atmosphere, create a cozy yet refreshing ambience inside the resort. Some of the guest rooms offer breath-taking views of the majestic Himalayan ranges.



Unit Size/Max Occupancy:

Studio Unit / 2 Adults



Unit Amenities:

- Air-conditioning
- Daily housekeeping
- DVD library
- Electronic safe
- Fruit basket on arrival
- Mini bar
- Satellite TV
- Skin-friendly bath amenities
- Tea / coffee maker



Resort Facilities:

- 2 restaurants
- Business centre / travel desk
- Discotheque
- Doctor on call
- Fitness centre / spa
- Games and activity room
- High speed internet
- Mini movie theatre
- Room service / laundry service
- Swimming pool



Area Facilities:

- Rock-climbing / trekking
- Bird watching / nature walks
- River-crossing
- Rappelling
- Boating kayaking
- Dune buggy / para-gliding
- Team games – cricket / football / badminton / volleyball / cycling



Check-in: 12pm
Check-out: 10am

Nearest Airport: Pantnagar Airport (PGH) (58km)
Address: District Nainital, Uttarakhand, India
Tel: +91 5942 247120
Web: www.countryinn.in

Estuary Island, Poovar, Traivandrum, Kerala

Estuary Island Resort is located in front of a great natural phenomenon, a place where a lake, a river, a sea and a beach meeting at one point during the summer season. The resort is accessible only by boat with a private boat jetty, which has ample parking space for vehicles and it is just a scenic 15-minute boat ride through a river and a lake surrounded by coconut groves. With a garden, coconut grove with comfy hammocks attached, and wooden deck over the water, guests can truly enjoy all the natural elements of the Estuary Island Resort.



Unit Size/Max Occupancy:

Estuary Garden / 2 Adults.

In case of extra bed, extra bed charges apply.



Unit Amenities:

- Television with Cable Channels
- Balcony
- Tea / Coffee making Facilities
- Direct Dialling Telephone
- Complimentary Toiletries
- Minibar
- Hair Dryer (Upon Request)
- Iron / Ironing Board (Upon Request)
- Individual Air-Conditioning Unit
- In-Room Safe



Resort Facilities:

- Swimming Pool
- Childrens Pool
- Live Entertainment (Seasonal)
- Auto Rental
- Laundry Services
- Restaurant
- Bar
- Conference Facilities (150 Pax Conference Hall and 30 Pax Board Room)
- Travel Desk
- Fitness Center
- Foreign Exchange
- Wi-Fi (Charges Apply)



Area Facilities:

- Beach
- Medical Facilities
- Shopping
- Trivandrum City Center
- Lion Safari Park
- Padmanabhaswamy Temple
- Kuthiramalika
- Napier Museum



Check-in: 12pm
Check-out: 11am

Nearest Airport: Trivandrum International Airport
Address: Estuary Island Resort, Poovar P.O., Trivandrum, Kerala 695 527
Tel: +91 471 2561000
Web: www.estuaryisland.com

Express Sarovar Portico, Faridabad, New Delhi

Express Sarovar Portico enjoys a close proximity to the commercial districts of South Delhi, and the Faridabad Industrial Area, and it is just 25 kms away from the international airport, 25kms from New Delhi Railway Station and 12 kms from the Faridabad railway station. Each guest room signifies the spirit of this progressive city, combined with modern amenities with offerings and banqueting facilities best suited for business travellers.



Unit Size/Max Occupancy:

Superior Room / 2 Adults

In case of extra bed, extra bed charges apply.



Unit Amenities:

- Tea / Coffee Maker
- Wi-Fi
- Shower Cubical
- LCD Television
- Direct Dialling Telephone
- Writing Desk
- Minibar



Resort Facilities:

- Valet Parking
- Wi-Fi
- In House Laundry
- Multi-Cuisine Restaurant
- Fitness Centre
- Banquets



Area Facilities:

- Badhkal Lake
- Tughlakabad Fort
- Baba Farid's Tomb
- Qutub Minar
- Lotus Temple
- Town Park
- National Museum



Check-in: 12pm
Check-out: 12pm

Nearest Airport: Palam Airport
Address: Sector 39 SurajKund Faridabad 121 010
Tel: +91 129 4249999
Web: www.sarovarhotels.com

Four Points by Sheraton Jaipur, Rajasthan

Welcome to the Four Points by Sheraton Jaipur at Tonk Road. Conveniently located only 3.22 km from the Airport and 5.5 km from the Railway Station, the hotel is in the heart of Jaipur and to major government and business organisations, universities and the new International Airport too. Offering world-class facilities such as a swimming pool, car rental, conference halls, fitness centre, and much more, the Four Points by Sheraton Jaipur is a must for all travellers.



Unit Size/Max Occupancy:

Comfort King & Comfort Twin / 2 Adults.

In case of extra bed, extra bed charges apply.



Unit Amenities:

- Television with Cable Channels
- Tea/Coffee making Facilities
- Direct Dialling Telephone
- Complimentary Toiletries
- Minibar (Chargeable)
- Hair Dryer (Upon Request)
- Iron/Ironing Board (Upon Request)
- Individual Air-Conditioning Unit
- In-Room Safe.



Resort Facilities:

- Swimming Pool
- Live Entertainment (Seasonal)
- Auto Rental
- Laundry Services
- Restaurant
- Bar- Bar
- Conference Facilities (Aravali Hall)
- Concierge
- Fitness Center
- Foreign Exchange
- Wi-Fi (Charges Apply)



Area Facilities:

- Shreemat Dagshusheth Halwai Sarvajanik Ganpati
- Darshan Museum
- Sri Balaji Mandir
- Raja Dinkar Kelkar Museum
- Bhimashankar Museum



Check-in: 2pm
Check-out: 2pm

Nearest Airport: Sanganer Airport
Address: City Square, Tonk Road, Jaipur, Rajasthan, India 302018
Tel: +91 22 4215 6390
Web: www.fourpointsjipur.com

Four Points by Sheraton Pune, Maharashtra

A Great Location; Four Points by Sheraton Hotel & Serviced Apartments, Pune. It is conveniently located only 3 kilometers from the airport, opposite to the Inorbit Mall and 200 meters from Phoenix Market City. Four Points Sheraton is an ideal choice for business or pleasure when visiting the area, and offer an array of amenities designed to make one feel at home.



Unit Size/Max Occupancy:

Comfort King & Comfort Twin / 2 Adults.

In case of extra bed, extra bed charges apply.



Unit Amenities:

- Television with Cable Channels
- Tea/Coffee making Facilities
- Direct Dialling Telephone
- Complimentary Toiletries
- Minibar (Chargeable)
- Hair Dryer (Upon Request)
- Iron/Ironing Board (Upon Request)
- Individual Air-Conditioning Unit
- In-Room Safe.



Resort Facilities:

- Swimming Pool
- Live Entertainment (Seasonal)
- Auto Rental
- Laundry Services
- Restaurant
- Bar- Bar
- Conference Facilities
- Concierge
- Fitness Center
- Foreign Exchange
- Wi-Fi (Charges Apply)



Area Facilities:

- Aga Khan Palace
- Osho Ashram
- Shaniwarwada
- Lal Mahal
- Singhad Fort

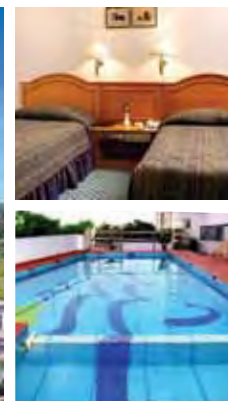


Check-in: 2pm
Check-out: 2pm

Nearest Airport: Lohegaon Airport
Address: 5th Mile Stone, Nagar Road, Pune Maharashtra 411 014 India
Tel: +91 20 3940 6699
Web: www.fourpointspune.com

Gokulam Park, Kochi, Kerala

A lavish property in Kochi, The Gokulam Park is one of the best known landmarks in the town. With a location close to prime business and shopping centres the hotel is easily a favourite with business and leisure travellers. The presence of good business amenities and conference facilities give an extra advantage to the corporate travellers to the place. All the rooms and suites come fitted with the best of luxuries one would want to make for a perfectly pleasurable stay.



Unit Size/Max Occupancy:

Superior Room / 2 Adults

In case of extra bed, extra bed charges apply.



Unit Amenities:

- Air-Conditioned Rooms
- Satellite TV
- Complimentary Newspaper
- Direct Dialling Phone
- Internet Access
- Minibar
- Turn Down Service
- Wake-up Call
- Hot & Cold Running Water



Resort Facilities:

- 24 Hours Front Desk
- Air-Conditioned Public Areas
- Banquet & Meeting Facilities
- Currency Exchange
- Fitness Centre
- Swimming Pool
- Business Centre
- Laundry Facilities
- 24 Hours Room Service



Area Facilities:

- Mattancherry Dutch Palace
- Jewish Synagogue
- Jew Town
- Fort Kochi
- St Francis Church

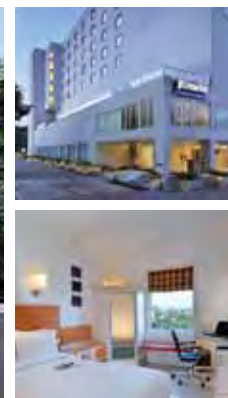


Check-in: 12pm
Check-out: 12pm

Nearest Airport: Cochin International Airport Limited
Address: Opp. P.V.S. Hospital, Kaloor, Kochi Kerala 682 017 India
Tel: +91 484 2400707
Web: www.sarovarhotels.com

Homitel Chandigarh, Punjab

Located in the heart of Chandigarh's industrial hub is Homitel Chandigarh. The hotel is 10 minutes away from the Chandigarh Railway Station and Airport and also enjoys close proximity to Delhi-Chandigarh National Highway and the famous Rajiv Gandhi Chandigarh Technology Park. The hotel offers 114 spacious, air-conditioned rooms coupled with modern amenities and facilities. The 8200 sq. ft. banqueting area is the largest in the city with a capacity to organize and handle functions of up to 600 guests.



Unit Size/Max Occupancy:

Superior Room / 2 Adults

In case of extra bed, extra bed charges apply.



Unit Amenities:

- Central Air-Conditioning & Heating
- Satellite TV
- Electronic Safe
- Tea/Coffee Maker
- Minibar
- Executive Writing Desk
- Room Service
- Wi-Fi



Resort Facilities:

- Banqueting Facility
- Fitness Centre
- Business Centre
- Concierge
- Wi-Fi
- Daily Shuttle Service between Hotel to Airport and Railway Station
- Dedicated Handicapped Room
- Doctor on Call



Area Facilities:

- Rock Garden
- Sukhna Lake
- Rose Garden
- Sector 17 Market
- International Dolls Museum
- The Capitol
- Botanical Garden
- Bougainvillea Garden
- Fitness Trails



Check-in: 12pm
Check-out: 12pm

Nearest Airport: Chandigarh Airport
Address: Plot No. 147-148, Industrial Area Phase 1, Chandigarh 160002
Tel: +91 172 4299999
Web: www.sarovarhotels.com

K2 @ Haveli Ratan

Located at the northern end of Jaipur, the Ratan Haveli is an old family mansion dating back to the 1700's and the golden age of the Maharajas. Designed and furnished by local Jaipur designers, there is an air of authenticity about this stunning location. Close to the ancient city walls, the Ratan Haveli is a mere 10 minutes from the centre of the Pink City.



Unit Size/Max Occupancy:

Studio Unit / 2 Adults



Unit Amenities:

- Telephone
- Television



Resort Facilities:

- Bawdi (stepped well)
- Games room
- Laundry
- Restaurant / bar



Area Facilities:

- Amber Fort
- City Palace
- Hawa Mahal
- Sightseeing



Check-in: 4pm
Check-out: 10am

Nearest Airport: Jaipur (16km)
Address: 240 & 242 Gatore Road, Brahmnpuri, Jaipur, Rajasthan, 302002, India
Tel: +91 141 2671027
Web: www.royalresorts.co.in

La Palace Sarovar Portico, Lucknow, Uttar Pradesh

For its central location and star-class amenities, the La Place Sarovar Portico has earned a good name with tourists who visit Lucknow. A little away from Hazratganj, the hotel is located right in the heart of the city and is not far from the commercial area of town. The hotel staff's dedication ensures that all the guests are provided with everything they need. Not only do the rooms come fitted with the best possible amenities, but also a good collection of personal care products are also provided. Do not miss out on experiencing famous Awadhi cuisine, typical of the region, served round-the-clock at the coffee shop.



Unit Size/Max Occupancy:

Superior Room / 2 Adults

In case of extra bed, extra bed charges apply.



Unit Amenities:

- 24 Hours Room Service
- Refrigerator
- Minibar
- Safety Lock
- Shoe Shine Service
- Tea / Coffee Maker
- Television



Resort Facilities:

- 24 Hours Coffee Shop
- Wi-Fi
- Laundry Service
- Doctor on Call
- Conference Facilities
- Travel Desk
- Business Centre
- Housekeeping Service
- Tour/Sightseeing Desk
- Wake-up Service



Area Facilities:

- Bara Imambra
- British Residency
- St Joseph's Cathedral
- Chowk
- Mankameswar Temple



Check-in: 12pm
Check-out: 12pm

Nearest Airport: Chaudhary Charan Singh Airport
Address: 6, Shahnajaf Road, Lucknow 226 001 Uttar Pradesh
Tel: +91 522 4004 040
Web: www.sarovarhotels.com

Lily Sarovar Portico, Nashik, Maharashtra

Lily Sarovar Portico in Nashik allows its guests the luxury of staying in perfect comfort while being easily connected to the main areas of town. Its convenient access to places like the railway station, the industrial areas and other important locations give business travellers and tourists the ultimate convenience.



Unit Size/Max Occupancy:

Superior Room / 2 Adults

In case of extra bed, extra bed charges apply.



Unit Amenities:

- Wi-Fi
- Minibar
- Writing Desk
- Electronic Safe
- Tea / Coffee Maker
- Laundry Services
- Currency Exchange
- Fitness Centre
- LCD Television



Resort Facilities:

- Fitness Centre
- Gymnasium
- Pool Table
- 24 Hours Coffee Shop
- Travel Desk



Area Facilities:

- Phalke Smark
- Deolali Camp
- Shirdi
- Anjenri
- Trimbakeshwar Pilgrim Centre
- Muktidam Temple
- Dudhsagar Falls
- Jain Mandir



Check-in: 12pm
Check-out: 12pm

Nearest Airport: Gandhinagar Airport
Address: 904 Mumbai Agra Road Nashik 422 009 Maharashtra
Tel: +91 253 2378383
Web: www.sarovarhotels.com

Mahagun Sarovar Portico - Vaishali, New Delhi

Located in the National Capital Region, Mahagun Sarovar Portico, Vaishali offers guests comfortable accommodation in the heart of one of India's most modern industrial centres. Mahagun Sarovar Portico, Vaishali is a contemporary full-service apartment style business hotel, which offers 127 elegantly designed and exquisitely furnished guest rooms and serviced apartments. In addition, guests can also enjoy fine dining, a lounge bar, and banquet facilities for meetings and corporate events.



Unit Size/Max Occupancy:

Superior Room / 2 Adults

In case of extra bed, extra bed charges apply.



Unit Amenities:

- LCD Television with Satellite Channels
- Direct Dialling Telephone
- Kitchenette
- Tea / Coffee Maker
- Mini Refrigerator
- Electronic Safe



Resort Facilities:

- Multi-Cuisine Restaurant
- Roof Top Swimming Pool
- Gymnasium
- Spa
- Roof Top Speciality Restaurant
- Travel Assistance
- Doctor on Call



Area Facilities:

- Akshardham Temple
- India Gate
- Jantar Mandar
- Qutab Minar
- Prgati Maidan



Check-in: 12pm
Check-out: 12pm

Nearest Airport: Indra Gandhi International Airport
Address: Mahagun Metro Mall, VC 3, Sector 3 Vaishali, Ghaziabad, Uttar Pradesh 201010
Tel: +91 120 467 7000
Web: www.sarovarhotels.com

Noorya Homotel, Pune, Maharashtra

Noorya Homotel is a household name in Chinchwad, Pune offering 117 rooms including 3 suites. The hotel also has a handicap-friendly room. Guests can enjoy many services and facilities such as in-room Wi-Fi access, gymnasium, swimming pool, 24-hours Business Centre, and the Flavours restaurant and Chill Bar, and 5 banquet halls.



Unit Size/Max Occupancy:

Standard Room / 2 Adults

In case of extra bed, extra bed charges apply.



Unit Amenities:

- Tea / Coffee Maker
- Hair Dryer
- LCD Television
- Direct Dialling Telephone
- Built-in Electronic Safe
- Minibar
- Writing Desk



Resort Facilities:

- Multi-Cuisine Restaurant
- Swimming Pool
- Fitness Centre
- Wi-Fi
- 5 Banquet Halls



Area Facilities:

- Raja Dinkar Kelker Museum
- Mahatma Phule Museum
- Parvati Hill Temple
- Shaniwar Wada
- Vishrambaug



Check-in: 12pm
Check-out: 12pm

Nearest Airport: Lohegaon Airport

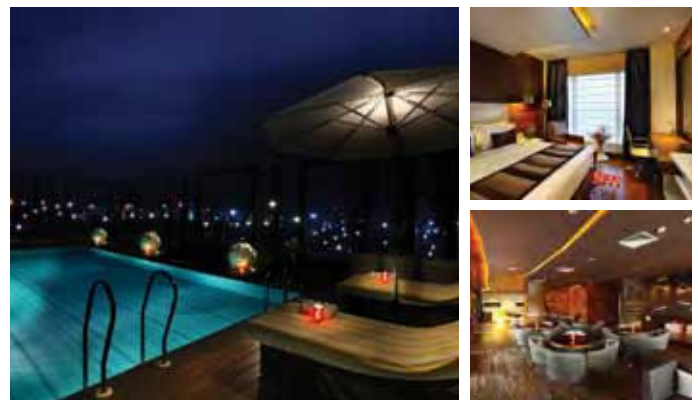
Address: S/ No 31 Opposite Aditya Birla Hospital, Thergaon Chinchwad Pune 411 033 Maharashtra

Tel: +91 20 3066 033 / 44

Web: www.nooryahotel.com

Park Plaza Delhi CBD Shahdara, New Delhi

Strategically located close to Connaught Place, Patparganj industrial area, Shastri Park IT Hub and in close proximity to Sahibabad industrial area and business district of Noida, the hotel is ideal for business travellers. The hotel is based in the central business district of Shahdara, East Delhi with close proximity to the railway station, metro station, domestic and international airport, offering the optimum blend of unrivalled comfort, outstanding value of service and convenience for every traveller.



Unit Size/Max Occupancy:

Standard Room / 2 Adults

In case of extra bed, extra bed charges apply.



Unit Amenities:

- Electronic Safe
- Wi-Fi
- DVD Player
- Hair Dryer
- Media Jack with HDMI cable
- Motorized Blinds
- iPod Docking Station
- LED Clock
- Mini Refrigerator



Resort Facilities:

- Swimming Pool
- Spa
- Gymnasium
- Salon
- Travel Desk
- Valet Parking
- 24 hours Business Centre
- Doctor on Call



Area Facilities:

- Akshardham Temple
- India Gate
- Jantar Mantar
- Qutab Minar
- Pragati Maidan
- Dilli Haat



Check-in: 12pm
Check-out: 12pm

Nearest Airport: Indira Gandhi International Airport

Address: Plot No 32 Central Business District Shahdara, New Delhi 110095

Tel: +91 11 4563 0000

Web: www.sarovarhotels.com

Phoenix Park Inn, Goa

Positioned moments from the mesmerizing, golden sand beaches bordered with swaying palms, the Phoenix Park Inn Resort hotel in Goa is perfect for holiday getaways. Goa visitors love the resort's location in the north district of the city, which provides access to attractions like the famous Sea N Sand Shack.



Unit Size/Max Occupancy:

Studio Unit / 3 Adults (a mattress will be given without any charges)
OR 2 Adults + 2 Children (Below 12 years)



Unit Amenities:

- 21" LCD Television with Cable Channels
- Direct Dialing Telephone
- Hair Dryer (Upon Request)
- Wi-Fi
- Individual Air-Conditioning Unit
- In-room Safe
- Iron/Ironing Board (Upon Request)
- Tea / Coffee Maker



Resort Facilities:

- Business Services
- Car and Bike Rental
- Concierge
- Doctor on Call
- Fitness Centre
- Foreign Exchange
- Gift Shop
- Wi-Fi
- Laundry
- Post | Parcel | Courier Service
- Shoe Shine
- Swimming Pool
- Restaurant



Area Facilities:

- John's Boat Tours
- InStyle Jewellers
- Chapora Beach
- Tony the Designer Jewellers
- Viceroy's Arch
- Kegdole Beach



Check-in: 2pm
Check-out: 12pm

Nearest Airport: Dabolim Airport, Goa (Approximately 45km away)

Address: Sequeira Vado, Candolim, Goa 403515 India

Tel: +91 832 6633333

Web: www.parkinn.com

Royal Goan Beach Club at Benaulim, Goa

Situated in the heart of Benaulim lies the quaint and cozy Beach Club. The apartments are tastefully decorated with a noticeable use of open space to help you relax in luxurious comfort. A short walk will get you to Benaulim beach, part of the 28 km long stretch of white sand in South Goa which feature some of the finest hotels in the state. Emerald green lawns line the swimming pool with its Hollywood style swim up bar. Snack by the pool or at the terrace restaurant which specializes in the choicest seafood and Goan delicacies



Unit Size/Max Occupancy:

1 Bedroom / 4 Adults



Unit Amenities:

- Room Service
- Kitchen
- Television
- Direct Dialing Telephone
- Bathroom | Ensuite
- Laundry
- Air-Conditioning



Resort Facilities:

- Spa
- Swimming Pool
- Jacuzzi
- Gymnasium
- Games Room
- Maid Service
- Child Care (on request)
- Restaurant
- Convenience Store



Area Facilities:

- Benaulim Beach
- Betabatim Beaches
- Colva Beaches
- Church of St John the Baptist
- Church of the Holy Spirit
- Nossa Senhora de Mercês Church



Check-in: 4pm
Check-out: 10am

Nearest Airport: Dabolim Airport, Goa (Approximately 30km away)

Address: Calvaddo, Benaulim, Goa 403716 India

Tel: +91 832 6725600

Web: www.royalresorts.com.au

Royal Goan Beach Club at Haathi Mahal, Goa

Haathi Mahal stands nestled between the sparkling Arabian Sea and the tropical river Sal. This magnificent hotel translated as 'Elephant Palace', has all the amenities you need set within its uniquely landscaped design, for a perfect vacation. Haathi Mahal blends an Indian and Goan atmosphere with the latest western hospitality amenities to give you a resort that makes you feel at home.



Unit Size/Max Occupancy:

1 Bedroom / 4 Adults



Unit Amenities:

- Room Service
- Kitchen
- Television
- Direct Dialing Telephone
- Bathroom | Ensuite
- Laundry
- Air-Conditioning



Resort Facilities:

- Spa
- Swimming Pool
- Jacuzzi
- Gymnasium
- Games Room
- Maid Service
- Child Care (on request)
- Restaurant
- Convenience Store



Area Facilities:

- Cavelossim Beach
- Mobor Beach
- Shree Shantadurga Devasthan
- Club Tito's
- Liquid Lounge



Check-in: 4pm
Check-out: 10am

Nearest Airport: Dabolim Airport, Goa (Approximately 40km away)
Address: Cavelossim, Mobor, Salcette, Goa 403 731 India
Tel: +91 832 6725300
Web: www.royalresorts.com.au

Royal Goan Beach Club at Monterio, Goa

Located adjacent to the Arpora river close to the very popular beaches of Baga and Calangute is the RGBC at Monterio. Set on the slopes of an undulating hillside, it is ideally suited for those looking for lively party and entertainment venues all within easy reach of the resort. As the resort is on a hillside, it is not recommended for handicapped guests.



Unit Size/Max Occupancy:

1 Bedroom / 4 Adults



Unit Amenities:

- Room Service
- Kitchen
- Television
- Direct Dialing Telephone
- Bathroom | Ensuite
- Laundry
- Air-Conditioning



Resort Facilities:

- Spa
- Swimming Pool
- Jacuzzi
- Gymnasium
- Games Room
- Maid Service
- Child Care (on request)
- Restaurant
- Convenience Store



Area Facilities:

- Calangute Beach
- Kerker Art Gallery
- Church of St Alex
- Baga Beach
- Fort Aguada

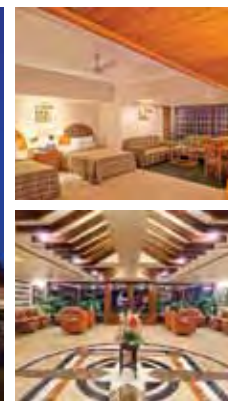


Check-in: 4pm
Check-out: 10am

Nearest Airport: Dabolim Airport, Goa (Approximately 40km away)
Address: Arpora-Baga Road, Calangute, Bardez, Goa 403 518 India
Tel: +91 832 6716200
Web: www.royalresorts.com.au

Sarovar Portico, Ahmedabad, Gujarat

Located close to the Gandhi Ashram, Akshardham Temple, and the Indian Institute of Management - Ahmedabad, the Sarovar Portico, Ahmedabad, brings you every possible comfort and a world-class luxury. Guests can enjoy facilities such as a business centre, coffee shop, currency exchange, and dry cleaning services. Not to mention that the entire property is handicap-friendly, this hotel is for every traveller.



Unit Size/Max Occupancy:

Standard Room / 2 Adults

In case of extra bed, extra bed charges apply.



Unit Amenities:

- Ceiling Fan
- Direct Dialling
- In-room Safe
- Laundry Bag
- Mini Bar
- Safety Lockers
- Satellite TV



Resort Facilities:

- 24 Hour Front Desk
- Business Centre
- Catering Services
- Coffee Shop
- Currency Exchange
- Desk with Electrical Outlet
- Disable Access to All Public Areas
- Dry Cleaning



Area Facilities:

- Gandhi Ashram
- Akshardham Temple
- Jumma Masjid
- Saiyad Masjid
- Indian Institute of Management, Ahmedabad

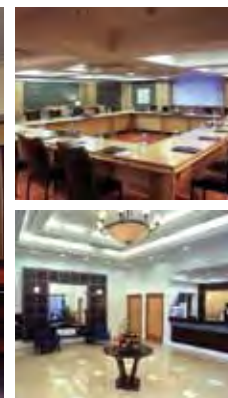


Check-in: 12pm
Check-out: 12pm

Nearest Airport: Sardar Vallabhai Patel Airport
Address: Bhawan's College Road, Khanpur Ahmedabad 380 001 Gujarat, India
Tel: +91 79 25601111
Web: www.sarovarhotels.com

Sarovar Portico, Indore, Madhya Pradesh

Sarovar Portico, Indore is located in the heart of the commercial area and close to the lively M G Road, where travellers can enjoy all that Indore has to offer. The hotel is 1 km from the railway station, 8 km from domestic airport, and 25 km away from the Industrial district of Pithampur. All major sporting venues and commercial streets are within a 2km radius of the hotel with the Indore cricket stadium, High Court and major Government and corporate houses at walking distance.



Unit Size/Max Occupancy:

Superior Room / 2 Adults

In case of extra bed, extra bed charges apply.



Unit Amenities:

- Tea / Coffee Maker
- Safe Locker
- 24 Hours Room Service
- Wi-Fi
- Laundry Service
- Mini Refrigerator



Resort Facilities:

- Concierge Service
- 24 Hours Currency Exchange
- Business Centre
- 24 Hurs Hot & Cold Water
- Bathroom Toiletries
- Daily Newspaper



Area Facilities:

- Lal Bagh Palace
- Kanch Mandir (Glass Temple)
- Indore Museum
- Bada Ganpati Temple
- Rajwada Palace
- Khajarana Temple



Check-in: 12pm
Check-out: 12pm

Nearest Airport: Devi Ahilyabai Holkar International Airport
Address: Treasure Island Mall, 11 South Tukoganj, M.G. Road, Indore 452001 Madhya Pradesh
Tel: +91 731 3072727
Web: www.sarovarhotels.com

Sarovar Portico, Jaipur, Rajasthan

With pleasant interiors and elegant decor, Sarovar Portico, Jaipur promises utmost luxury and comfort. Prominently located in Vaishali Nagar, the hotel can be easily accessed by all means of transport. Offering the best in hospitality, our leisure hotel in Jaipur offers modern comforts such as a business centre, swimming pool, fitness centre, and more. Sarovar Portico, Jaipur is also fully equipped with state-of-the-art business facilities and conference rooms to suit the needs of every corporate traveller.



Unit Size/Max Occupancy:

Superior Room / 2 Adults

In case of extra bed, extra bed charges apply.



Unit Amenities:

- Centrally Air-Conditioned
- LCD Television with Satellite Channels
- Direct Dialling Telephone
- 24 Hours Room Service
- Iron & Ironing Board on request
- Tea/Coffee Maker
- Laundry Service
- Minibar
- Writing Desk
- Electronic Safe
- Hair Dryer
- Wi-Fi



Resort Facilities:

- 24 Hour Front Desk
- Currency Exchange
- Business Centre
- Travel Desk
- Concierge Service
- Vehicle Parking Area
- Fitness Centre
- Swimming Pool
- Wi-Fi



Area Facilities:

- Amar Jawan Jyothi
- Vidhan Sabha Bhavan
- Birla Mandir
- Hawa Mahal
- Jai Mahal



Check-in: 12pm
Check-out: 12pm

Nearest Airport: Domestic Airport
Address: Plot No 90, Bhan Nagar - B, Prince Road, Queens Road, Vaishali Nagar, Jaipur 302 021 Rajasthan India
Tel: +91 141 5157777
Web: www.sarovarhotels.com

Sarovar Portico Rajkot, Gujarat

The stylish décor and excellent service at Sarovar Portico Rajkot ensure a comfortable stay for guests. The hotel is strategically located with the domestic airport and railway station at a distance of 3.5 km and 3 km, respectively. Sarovar Portico offers guests a delightful dining experience at Mehek, the multi-cuisine restaurant and Sky Lounge, the rooftop restaurant. The 24 hour room service and convenient location make it one of the best hotels in Rajkot.



Unit Size/Max Occupancy:

Standard Executive Room / 2 Adults.

In case of extra bed, extra bed charges apply.



Unit Amenities:

- LCD Television with Multiple Channels
- 24 Hours Room Service
- Tea/Coffee Maker
- Electronic Safe
- Hair Dryer
- Mini Refrigerator
- Tea / Coffee Maker



Resort Facilities:

- Complimentary Airport Pickup or Drop on Sharing Basis.
- Complimentary Buffet / Fixed Menu Breakfast at Mehek Restaurant only.
- Wi-Fi
- Complimentary One Bottle of Packed Drinking Water on Daily Basis.
- Daily News Paper in Room.



Area Facilities:

- Rotary Dolls Museum
- Kaba Gandhi No Delo
- Jagat Mandir
- Aji River and Dam

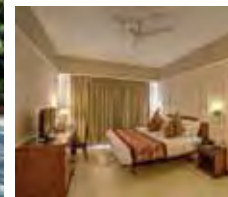


Check-in: 12pm
Check-out: 12pm

Nearest Airport: Rajkot Airport
Address: Dr. Rajendra Prasad Road, Limda Chowk, Opp. Shastri Maidan, Rajkot 360 001 Gujarat
Tel: +91 281 301 6000
Web: www.sarovarhotels.com

Shraddha Inn, Shirdi, Maharashtra

Shraddha Inn in Shirdi exudes peace and serenity. It is managed by Sarovar Hotels and has notable facilities and services to match the best in Shirdi. The hotel is a perfect blend of spirituality and royalty. Located in Pimpalwadi Road, this hotel is walking distance to the holy Sai Baba temple. Strategically located in the pilgrimage city, the hotel is easily accessible to important areas such as Sakuri, Shani Shingnapur, Grineshwar Temple, Gurusthan and Ellora caves.



Unit Size/Max Occupancy:

Superior Room / 2 Adults

In case of extra bed, extra bed charges apply.



Unit Amenities:

- Direct Dialling Telephone
- Complimentary Toiletries
- Minibar



Resort Facilities:

- Fully Equipped Fitness Centre
- Swimming Pool
- Children's Play Area with Water Slides
- Laundry / Valet Service
- Ayurveda Therapy Centre
- Games Room with Library
- Drivers accommodation



Area Facilities:

- Sawai Mansingh Stadium
- Museum of Indology
- Central Museum
- Ram Niwas Gardens
- Jantar Mantar
- Hawa Mahal
- City Palace
- Nahargarh Fort
- Galta-Monkey Palace Gaitor
- Jal Mahal
- Amber Fort
- Amber Palace



Check-in: 12pm
Check-out: 12pm

Nearest Airport: Aurangabad airport
Address: Pimpalwadi Road, Shirdi, Maharashtra, India 423 109
Tel: +91 22 4215 6390
Web: www.shraddhainn.com

The Corinthians Resort and Club, Pune, Maharashtra

The Corinthians is a resort with magnificent Greco-Egyptian architecture. With its stucco plastered walls and individual sit outs, set amidst the hills of South Pune with tastefully done rooms, exquisite banquets and landscaped gardens, The Corinthians Resort and Club extends over 25 acres of land.

Each of our 116 guest rooms and suites is a lavish and magnificently designed retreat with the finest luxuries. The living spaces are airy, spacious and vibrant, perfect for all guests.



Unit Size/Max Occupancy:

Deluxe Room / 2 Adults

In case of extra bed, extra bed charges apply.



Unit Amenities:

- Daily Newspaper
- Tea / Coffee Maker
- Individual Temperature Control
- Air-Condition
- Electronic Locking System
- Digital Safe
- Ironing Board (On Request)
- Minibar
- LCD Television
- Wi-Fi
- Weighing Scale
- Hair Dryer
- Magnifying Mirror



Resort Facilities:

- Swimming Pool
- Children's Pool
- Indoor and Outdoor Sports / Games
- Laundry Services
- 2 Restaurants
- Conference Facilities
- Fitness Center
- Wi-Fi (charges apply)
- The First Brew



Area Facilities:

- Indoor and Outdoor Sports Facilities
- Medical Facilities
- Katraj Snake Park
- Shaniwarwada
- Aga Khan Palace
- Sihnegadh Fort
- Parvati Hills
- Empress Botanical Gardens
- Saras Baug (Saras Gardens)



Check-in: 2pm
Check-out: 11am

Nearest Airport: Lohegaon Airport
Address: Nyati County, NIBM Annexe, Pune, Maharashtra, India 411060
Tel: +91 20 2695 2218
Web: www.thecorinthianspune.com

Emerald Villas, Bali

Emerald Villas is on the border of the famous Bali Hyatt Hotel. You can walk to a sparkling white sand beach in five minutes and stroll for hours along Sanur's famous beach walkway. You can enjoy swimming, snorkeling, scuba diving, boating and fishing, in a protected lagoon that stretches for six kilometers. Located on a cul-de-sac with your own private road plus 24-hour security service, Emerald Villas assures you peace and quiet, with only the melody of colorful birds, and the wind off the nearby ocean rustling through the coconut trees.



Unit Size/Max Occupancy:

1 Bedroom / 4



Unit Amenities:

- Air-conditioning
- Cable TV
- Coffee making facilities
- Colour TV
- Fridge
- Microwave
- Safe
- Telephone



Resort Facilities:

- Internet Facilities
- Laundry
- No Pets Allowed
- Restaurant / Bistro
- Swimming Pool – Outdoor
- Tour Desk



Area Facilities:

- Beach
- Boating
- Fishing
- Health Club
- Medical
- Restaurants
- Scuba Diving
- Snorkelling
- Supermarket

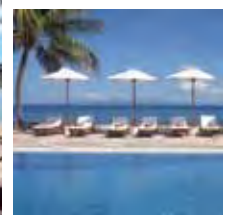


Check-in: 3pm
Check-out: 10am

Nearest Airport: Denpasar International Airport (DPS) (15km)
Address: Jalan Karangasati, No.5 Sanur, Bali, Indonesia
Tel: +62 361 284069
Web: www.xchangeworld.com

Royal Bali Beach Club Candidasa, Bali

Located on Balina beach on the outskirts of Candidasa, the Royal Bali Beach Club is an exclusive Private Member's Club. The ambiance is uniquely Balinese with traditional architecture and stone carvings of ancient Gods, which adorn the surroundings.



Unit Size/Max Occupancy:

1 Bedroom / 4
Studio Unit / 2



Unit Amenities:

- Air-conditioning
- Bathroom
- Mini kitchen
- Laundry
- Telephone



Resort Facilities:

- Beach
- Boating
- Child care
- Convenience store
- Jacuzzi
- Maid service
- Restaurant
- Spa pool
- Swimming pool



Area Facilities:

- Beach
- Boating / fishing
- Candidasa Beach Restaurants
- Goa Lawah Temple
- Mountains / bushwalking
- Snorkeling
- Tennis



Check-in: 3pm
Check-out: 10am

Nearest Airport: Bali Ngurah Rai International Airport (65km)
Address: Puri Buitan, Manggis, Bali 80871, Indonesia
Tel: +62 363 41021
Web: www.xchangeworld.com

Royal Bali Beach Club Jimbaran Bay, Bali

Located adjacent to the beautiful beach of Jimbaran Bay, this Royal Bali Beach Club offers an exclusive and private holiday experience that you will never forget. The resort is truly first class with sixteen luxury one- bedroom apartments each fully air conditioned and with private balconies or courtyards. The pool area is breathtakingly beautiful and a pleasant place to relax after a day on the beach, a fun filled shopping trip to nearby Kuta or a day excursion around the island.



Unit Size/Max Occupancy:

1 Bedroom / 4



Unit Amenities:

- Air-conditioning
- Bathroom
- Mini kitchen
- Laundry
- Telephone



Resort Facilities:

- Child care
- Maid service
- Restaurant
- Swimming pool



Area Facilities:

- Beach
- Bingin Beach
- Boating / Fishing
- Convenience store
- Dreamland Beach
- Garuda Wisnu Kencana Monument
- Golf
- Jimbaran Bay Fish Market
- Uluwatu Temple
- Waterbom Waterpark



Check-in: 2pm
Check-out: 10am

Nearest Airport: Bali Ngurah Rai International Airport (8km)

Address: Uluwatu, Jimbaran, Bali, Indonesia

Tel: +62 361 701737

Web: www.xchangeworld.com

The Seminyak Village Resort & Villa, Bali

Located in the heart of the fashionable Seminyak area, the resort is just steps away from the white sandy beach of Petitenget. Nearby, from Oberoi Street to Legian, are charming Balinese temples, shops selling handicrafts, boutiques, cafes, and restaurants offering a wide array of international cuisine. The resort is centred around a large pool and surrounded by lush gardens with flowering trees. Poolside rooms are housed in quaintly charming wooden thatched villas and furnished in a contemporary Balinese style.



Unit Size/Max Occupancy:

Hotel Unit / 4



Unit Amenities:

- Air-conditioning
- DVD player on request
- Electric kettle / Toaster
- Electric stove / Iron
- Hairdryer
- House phone
- Refrigerator / Microwave oven
- Safe deposit box
- TV with international channels
- Water dispenser



Resort Facilities:

- Badminton / cricket
- Discotheque
- Play area
- Table tennis / carom / chess / snooker
- Workshops on pottery / glass-painting



Area Facilities:

- Diving / sea sports along beach
- Seminyak Beach
- Seminyak Square
- Tanah Lot Temple



Check-in: 12pm
Check-out: 10am

Nearest Airport: Ngurah Rai International Airport, Denpasar, Bali (DPS) (12km)

Address: Jl. Beraban 888x, Br. Taman – Seminyak. Kuta, Bali. Indonesia

Tel: + 62 361 736301

Web: www.xchangeworld.com

Grand Palladium Jamaica Resort & Spa, Montego Bay

The resort is bathed by the calm, turquoise waters of Jamaica's north coast, in a small bay on a privileged beach enclave. Its design reflects the perfect harmony between modern facilities and luxury, and the stunning, natural environment of the area. The complex also houses an ultramodern spa, which is equipped with state of the art facilities and offers guests a wide variety of therapies and services. The resort is close to the village of Lucea and approximately 30 minutes from Montego Bay and its airport. Guests can also use the services and facilities of the neighbouring Grand Palladium Lady Hamilton Resort & Spa.



Unit Size/Max Occupancy:

Hotel Unit / 2



Unit Amenities:

- Air-conditioning
- Satellite TV
- Electronic safe
- Hair dryer
- Tea and coffee making facilities
- Iron and ironing board
- Balcony or terrace
- Minibar



Resort Facilities:

- 10 restaurants
- Bars
- Swimming Pool
- Spa
- Hairdresser and beauty salon
- Games and activities by the pool and on the beach
- Free Wi-Fi at the hotel lobby
- Night entertainment
- Car rental



Area Facilities:

- Pool
- Beach
- Ball games
- Racket games

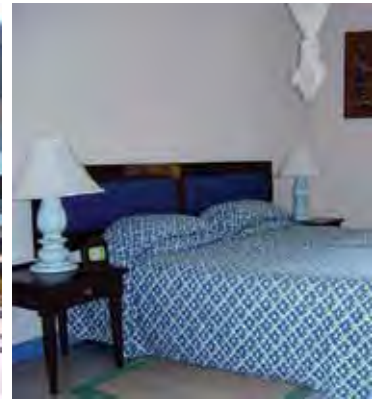


Check-in: 3pm
Check-out: 12pm

Nearest Airport: Sangster International Airport (Approximately 32km away)
Address: The Point, Lucea, Hanover, Jamaica WI
Tel: + 876 619 00 00
Web: www.xchangeworld.com

Royal Reserve Safari Beach & Country Club

Royal Reserve Safari & Beach Club is set on the white sandy beaches of Kikambala, 16 km north of Mombasa town. Its glistening white sands, swaying palms and calm turquoise waters make it the perfect setting for an idyllic holiday.



Unit Size/Max Occupancy:

1 Bedroom / 4



Unit Amenities:

- Balcony
- Fridge
- Microwave
- Safe deposit
- Satellite TV / DSTV



Resort Facilities:

- Beach
- Car rental
- Grocery store
- Hairdresser
- Health club
- Laundry service
- Mini golf
- Restaurant / bistro
- Squash court
- Swimming pool



Area Facilities:

- Casino
- Fishing
- Golf
- Horse riding
- Medical
- Scuba diving
- Water skiing
- Windsurfing



Check-in: 4pm
Check-out: 10am

Nearest Airport: Mombasa (17 miles)
Address: P O Box 34190 Kikambala, Kanamai Conference, Mombasa Kenya
Tel: 254 20 2057155
Web: www.xchangeworld.com

Country Villas Kajang, Selangor

Country Villas is Malaysia's first Mediterranean-style complex of waterfront homes. It is a great choice for those who prefer the ultimate experience of contemporary countryside living. Imagine waking each day to the sweet smell of the surrounding greenery, the sound of birds chirping, and the feel of crisp fresh air blowing.



Unit Size/Max Occupancy:

3 Bedroom / 6



Unit Amenities:

- Air-conditioning
- Astro channels
- Coffee & tea making facilities
- DVD player
- Full kitchen
- Television



Resort Facilities:

- Aerobic room
- 8 Badminton courts (indoor)
- Basketball / Gymnasium
- Bicycle for rental
- Children's playground (outdoor)
- Children's playroom (indoor)
- Fishing
- Swimming pool
- Tennis court
- Volleyball



Area Facilities:

- Cyberjaya
- Flinders Park
- Kuala Lumpur City Centre
- Putrajaya



Check-in: 3pm
Check-out: 12pm

Nearest Airport: Kuala Lumpur International Airport (KLIA) (30km)

Address: Jalan Cinta Alam, 43000 Kajang, Malaysia

Tel: +603 8737 2288

Web: www.xchangeworld.com

Heritage Hotel Cameron Highlands, Pahang

Amid the cool hills of Cameron Highlands sits this cosy hotel offering a quiet respite in calming lush green surroundings. Nature lovers will enjoy hiking, excursions to nearby tea plantations, a butterfly farm, fruit and vegetable markets, a strawberry farm and a rose garden. For the sporty, there's always jungle hiking, and several rounds of golf.



Unit Size/Max Occupancy:

Hotel Unit / 2



Unit Amenities:

- IDD telephone service
- In-house movies
- Mini bar
- Tea and coffee making facilities



Resort Facilities:

- Convenience store
- Health centre
- Mini library
- Restaurant & bar
- Sauna & steam room
- Squash court



Area Facilities:

- Butterfly Farm
- Cactus Valley
- Palas Tea Estate
- Robertson Rose Garden
- Rose Centre Kea Farm
- Rose Museum
- Strawberry Farm
- Vegetables and Fruits Market



Check-in: 3pm
Check-out: 12pm

Nearest Airport: Kuala Lumpur International Airport (200km)

Address: Gereja Tanah Rata Road, 39000 Cameron Highlands, Pahang Darul Makmur, Malaysia

Tel: +60 5491 3888

Web: www.xchangeworld.com

Palace of the Golden Horses, Selangor

The Palace of the Golden Horses is a component of the Mines Resort City and tagged as Asia's Most Extraordinary Hotel; a world-class award-winning luxury hotel. The hotel, with its harmonious blend of Moorish architecture and Malaysian culture, has played host to some of the world's most illustrious names and prominent figures.



Unit Size/Max Occupancy:

Hotel Unit / 2



Unit Amenities:

- Coffee & tea making facilities
- Electronic safe
- Hairdryer
- Mini bar



Resort Facilities:

- Boutiques
- Business centre
- Concierge
- Free shuttle service transfer to KLCC & Bukit Bintang
- Gymnasium
- Jogger's track
- Laundry and valet services
- Restaurants
- Swimming pool



Area Facilities:

- Central Market
- Chinatown
- Mines Cruise
- Mines Wonderland Theme Park
- Old Railway Station
- Petronas Twin Towers
- Shopping malls
- Sultan Abdul Samad Building



Check-in: 3pm
Check-out: 12pm

Nearest Airport: Kuala Lumpur International Airport (KLIA) [59km]
Address: Jalan Kuda Emas, The Mines Resort City, 43300 Seri Kembangan, Selangor Darul Ehsan
Tel: +603 8943 2333
Web: www.xchangeworld.com

Resort Suite Pyramid Tower, Selangor

Enjoy the posh privacy, superb service and exquisite enormity of space offered by the majestic marvel that is the one and only Sunway Resort Hotel & Spa. All guestrooms are nothing short of spectacular; cosy yet fully equipped with the most modern of facilities and amenities.



Unit Size/Max Occupancy:

Studio Unit / 3



Unit Amenities:

- Air-conditioning
- Balcony/terrace
- CD & DVD player
- Coffee & tea making facilities
- Hairdryer
- Kitchenette
- Safe deposit box
- Telephone
- Television



Resort Facilities:

- Bar & lounge
- Car rental
- Conference facilities
- Exercise equipment
- Gym / health centre
- Internet access
- Laundry
- Lounge
- Spa
- 24-hour security



Area Facilities:

- Extreme Park
- Oasis Boulevard
- Sunway Lagoon Theme Park
- Sunway Pyramid Shopping Mall
- Sunway Wildlife Interactive Zoo



Check-in: 3pm
Check-out: 12pm

Nearest Airport: Kuala Lumpur International Airport (KLIA) [52km]
Address: Persiaran Lagoon, Bandar Sunway, 46150 Petaling Jaya, Selangor Darul Ehsan, Malaysia
Tel: +603 7492 8000
Web: www.xchangeworld.com

Sunway Hotel, Georgetown, Penang

The 4-star Sunway Hotel Georgetown is centrally situated in the heart of the bustling historical city of Georgetown at the crossroads of culture and commerce. Just minutes away from KOMTAR - the hub of government activities and home to Penang's largest shopping complex - other major shopping centres and famed hawker centres, the hotel caters to every lifestyle convenience you might need.



Unit Size/Max Occupancy:

Hotel Unit / 2



Unit Amenities:

- Air-conditioning
- Broadband Internet access
- Coffee & tea making facilities
- Hairdryer
- Mini bar
- Telephone
- Television



Resort Facilities:

- Baby sitting services
- Gymnasium
- Indoor car park
- swimming pool with Jacuzzi
- Laundry and valet service
- Safe deposit boxes
- Samsara spa
- Tennis, squash and golfing
- Travel arrangements
- Wifi hot spot Internet access



Area Facilities:

- Batu Feringghi
- Botanical Gardens
- Burmese Temple
- Fort Cornwallis
- Georgetown
- Kek Lok Si Temple
- Komtar
- Penang Butterfly Farm
- Penang Museum
- Snake Temple



Check-in: 2pm
Check-out: 12pm

Nearest Airport: Penang International Airport (22km)
Address: No. 33, New Lane (Off Jalan Macalister Road) Georgetown, 10400 Penang, Malaysia
Tel: +603 4229 9988
Web: www.xchangeworld.com

The Legend Resort Cherating, Pahang

Nestled on 16 acres, along one of the finest stretches of beach in Cherating, on the east coast of Malaysia, lies this popular seaside resort. With its breath-taking beach and two large swimming pools fronting the South China Sea, the Legend Resort is an ideal place for relaxation. A sport complex houses a sauna, whirlpool, gymnasium, and an array of indoor and outdoor games. Sea sports and island tours are available. Visits to the local countryside handicraft centres can be arranged at a fee.



Unit Size/Max Occupancy:

Hotel Unit / 2



Unit Amenities:

- Air-conditioning
- Cable TV
- Hairdryer
- Mini bar



Resort Facilities:

- Swimming pools
- Children's pool
- Gymnasium
- Tennis courts
- Squash courts
- Sauna
- Table tennis
- Indoor board games
- Snooker table
- Beach volleyball
- Football
- Video games
- Pool table



Area Facilities:

- Beach
- Convenience store
- Transportation service
- Fishing
- Water Sports



Check-in: 3pm
Check-out: 12pm

Nearest Airport: Kuantan Airport (KUA) (50km)
Address: Lot 1290, Mukim Sungai Karang Cherating 26080 Kuantan, Pahang, Malaysia
Tel: +609 581 9818
Web: www.xchangeworld.com

Coral Azur Mont Choisy Hotel

Nestling in a pretty garden, the Coral Azur Mont Choisy Hotel overlooks a delightful beach of golden sand, bordered by filao trees. A good part of its success is due to the atmosphere skilfully created by the local staffs who respect the traditional welcome, hospitality and cuisine of the island.

The resort offers a wide range of recreational and sporting activities and entertainment, for young and old alike.



Unit Size/Max Occupancy:

Standard Garden View Room / 2



Unit Amenities:

- TV with cable channels
- Coffee & tea-making facilities
- Direct-dial telephone
- Hairdryer (upon request)
- Individual air-conditioning unit
- In-room safe
- Wake-up call
- Mini bar
- Writing desk
- Baby cot (upon request)



Resort Facilities:

- Swimming pool
- Children's pool
- Tennis court
- Laundry service
- Restaurant
- Conference facilities
- Doctor on call
- Auto rental
- Taxi services
- Post, parcel and courier service
- Water sports
- Child care service
- Housekeeping service



Area Facilities:

- Beach
- Port Louis
- Pamplemousse
- Botanical Gardens
- Moka Mountains
- Grand Bassin
- Colours at Chamarel
- Ile aux Cerfs
- Shopping
- L'aventure du sucre



Check-in: 2pm
Check-out: 12pm

Nearest Airport: Sir Seewoosagur Ramgoolam International Airport (64 km, 1½hours away)

Address: Coastal Road Mont Choisy, Mauritius

Tel: +230 265 6336

Web: www.xchangeworld.com

Grand Palladium Vallarta Resort & Spa, Riviera Nayarit

Surrounded by lush tropical local vegetation, fronted by 300 metres of fine white sand, and bathed by the crystalline waters of the Pacific Ocean, the resort truly lulls you into a tropical holiday mood. The resort's buildings are fully integrated into the surrounding landscape, creating a natural and exotic ambience among the golden beaches and rich greenery.

Close to the exclusive Punta de Mita area, you'll enjoy the best that the Nayarit Riviera has to offer - breath-taking landscapes, delicious dining, fun facilities, a relaxing spa and top-notch service.



Unit Size/Max Occupancy:

Hotel Unit / 2



Unit Amenities:

- Air-conditioning
- Satellite TV
- Electronic safe
- Hair dryer
- Tea and coffee making facilities
- Iron and ironing board
- Minibar
- MP3 player station



Resort Facilities:

- 5 restaurants
- Bars
- Swimming pools
- Games and activities by the pool and on the beach
- Night entertainment
- Spa
- Car rental



Area Facilities:

- Water gym
- Table tennis
- Ball games
- Participation games
- Racket games
- Water polo
- Archery
- Darts
- Aerobics



Check-in: 3pm
Check-out: 12pm

Nearest Airport: Gustavo Diaz Ordaz Airport (Approximately 45km away)

Address: Carretera Punta de Mita KM 11.5 Bahia de Banderas Nayarit Mexico 63734

Tel: +52 329 226 9900

Web: www.xchangeworld.com

Grand Palladium Riviera Resort & Spa, Riviera Maya

This luxury eco-hotel is built on a sprawling seafront property with direct access to an 800 m stretch of the fine white sands of Kantenah Beach. The resort features large landscaped gardens with lush tropical vegetation and an extensive network of nature trails, perfect for relaxing strolls. The complex also houses a large ultramodern spa equipped with the most advanced facilities to offer guests a wide variety of therapies and services.

Our guests can also use the facilities at Grand Palladium Colonial Resort & Spa, Grand Palladium Kantenah Resort & Spa and Grand Palladium Riviera Resort & Spa.



Unit Size/Max Occupancy:

Hotel Unit / 2



Unit Amenities:

- Air-conditioning
- Satellite TV
- Electronic safe
- Hair dryer
- Tea and coffee making facilities
- Iron and ironing board
- Bathrobes and slippers
- Minibar
- MP3 player station



Resort Facilities:

- 13 restaurants
- Bars
- Swimming pools
- Spa
- Games and activities by the pool and on the beach
- Free Wi-Fi at the hotel lobby
- Night entertainment
- Sunset Boulevard disco featuring Caribbean and international music



Area Facilities:

- Water gym
- Table tennis
- Ball games
- Participation games
- Racket games
- Water polo
- Archery
- Rifle shooting
- Darts
- Aerobics



Check-in: 3pm
Check-out: 12pm

Nearest Airport: Cancun Airport (Approximately 80km away)
Address: Carr Federal Chetumal- Puerto Juarez KM256- 100 Municipio Solidaridad, Mexico
Tel: +52 984 877 21 00
Web: www.xchangeworld.com

Canyon Cove Beach Club, Batangas

Canyon Cove Resort lets you enjoy the perfect blend of recreation and relaxation. At this stunning beachfront resort in Nasugbu, Batangas, you are wrapped in pure holiday bliss. Feel refreshed and invigorated with the wide range of first-rate facilities and services. From the white-sand beach, where you can bathe lazily under the sun, to the dining hubs that serve delectable dishes, Canyon Cove guarantees a vacation that's more than satisfying. A truly heavenly experience.



Unit Size/Max Occupancy:

Hotel Unit / 2



Unit Amenities:

- Coffee and tea making facilities
- Electronic safe
- Flat screen cable TV
- Mini-refreshment bar
- Shower and tub



Resort Facilities:

- 2-Tier beach area
- Beach volleyball court
- Convention hall
- Game room
- Gym & health bar
- Swimming pool / kiddie pool & slide
- Kids' playground
- Restaurant & bar
- Spa & wellness centre



Area Facilities:

- Banana boats
- Glass boats
- Jet skiing
- Kayaking
- Motorboats
- Parasailing
- Sailing
- Scuba diving
- Snorkelling
- Water skiing



Check-in: 2pm
Check-out: 12pm

Nearest Airport: Ninoy Aquino International Airport (60km)
Address: Far East Road, Piloto Wawa Nasugbu, Batangas, Philippines
Tel: +63 2520 6400
Web: www.xchangeworld.com

Canyon Woods Residential Suites, Batangas

A landmark residential resort, Canyon Woods Residential Resort Batangas sits in a prime location that provides panoramic views of Taal Lake, Taal Volcano, Balayan Bay and Batangas Valley. Aside from its upscale lodgings, the resort complex covers a premier clubhouse, a nine-hole golf course and a pavilion campsite.



Unit Size/Max Occupancy:

Hotel Unit / 4



Unit Amenities:

- Air-conditioning
- Alarm clock
- Coffee and tea making facilities
- Electronic safe
- Flat screen cable TV
- Hairdryer
- Iron & ironing board
- Mini-refreshment bar
- Saftey deposit box
- Telephone



Resort Facilities:

- Basketball & tennis court
- Bowling centre
- Golf course
- Gym & fitness centre
- Restaurant & bar
- Spa & wellness centre
- Swimming pool



Area Facilities:

- Horseback riding
- People's Park in the Sky
- St. Anne's Shrine
- Taal Volcano



Check-in: 3pm
Check-out: 12pm

Nearest Airport: Ninoy Aquino International Airport (60km)
Address: Canyon Woods Residential Resort Diokno Highway, Bgy. San Gregorio Laurel, Batangas, 4221 Philippines
Tel: +632 521 7878
Web: www.xchangeworld.com

Crown Regency Beach Resort, Boracay

Situated on a pearly white beachfront, the resort's decor mimics that of a sun-drenched island with beautiful sunsets creating an amazing display of amber, orange and golden hues, exemplifying the passion of fire. This fire element shows in the streaks of sunlight that light up the warm and vibrant interiors of the resort.



Unit Size/Max Occupancy:

Hotel Unit / 2



Unit Amenities:

- Air-conditioning
- Broadband
- Cable TV
- Hot and cold shower with complete bath amenities
- Non-smoking room
- Telephone



Resort Facilities:

- Infinity pool
- The Lobby lounge
- Tops chill out bar



Area Facilities:

- Bat Cave
- Crystal Cove
- Island tours
- Kar-Tir Shell Museum
- Mount Luho
- White Beach
- Willy's Rock



Check-in: 2pm
Check-out: 12pm

Nearest Airport: Caticlan International Airport (5km)
Address: Boat Station 3 Area, Ambulong, Barangay Manoc Manoc, Malay, Aklan, Boracay Island 5608, Philippines
Tel: +63 36 288 1888
Web: www.xchangeworld.com

Crown Regency Hotels & Towers, Cebu

Right at the heart of the city, in close proximity to the major points of commerce and recreation, rises the 38-storey Tower 1 of the Crown Regency Hotel and Towers, the tallest building in Metro Cebu. The hotel offers you the highest levels of comfort and convenience in each of its rooms. Discover more of life and pleasure at the Crown Regency Hotel and Towers.



Unit Size/Max Occupancy:

Hotel Unit / 4



Unit Amenities:

- 24-hour room service
- Daily local newspaper
- Full bath with bath tub
- Hairdryer
- In-room broadband access
- Non-smoking rooms
- Telephone
- Television



Resort Facilities:

- Aqua fitness pool
- Bar & lounge
- Club Ultima's business centre
- Foreign exchange
- Gym
- Prana medispa
- Restaurants
- Safety deposit boxes



Area Facilities:

- Basilica Minore del Santo Nino
- Beach
- Business & Financial District
- Fort San Pedro
- Magellan's Cross
- Plaza Independencia
- Shopping centres
- Taoist Temple



Check-in: 2pm
Check-out: 12pm

Nearest Airport: Mactan-Cebu International Airport (14km)
Address: Tower 1, Fuente Towers, Osmeña Boulevard, Cebu City 6000, Philippines
Tel: +63 32 4188888
Web: www.xchangeworld.com

Crown Regency Residences Davao, Davao

Situated conveniently close to Davao International Airport, the hotel is designed to provide the utmost comfort for your stay with spacious themed rooms and suites, as well as recreation and entertainment facilities to suit just about every whim. Feel all stress melt away in the day spa, or get your fill of the sun by the pool. Nearby the hotel are various sites to keep one engaged – from the lovely Eden Nature Park to the historic Battle Memorial, or San Pedro's Cathedral.



Unit Size/Max Occupancy:

Hotel Unit / 4



Unit Amenities:

- 24-hour room service
- Air-conditioning
- Coffee & tea making facilities
- Full baths
- Hot & cold shower
- Television



Resort Facilities:

- Business centre
- Car rental
- Day spa
- Foreign exchange
- Gymnasium
- Laundry service
- Restaurant
- Roof garden
- Safety deposit boxes
- Swimming pool



Area Facilities:

- Battle Memorial
- Eden Nature Park
- San Pedro Cathedral



Check-in: 2pm
Check-out: 12pm

Nearest Airport: Davao International Airport (5km)
Address: J.P. Cabaguio Avenue, Agdao Davao City 8000, Philippines
Tel: +63 82 3008188
Web: www.xchangeworld.com

Crown Regency Suites Mactan, Cebu

Beautifully set on a sprawling 1.5 hectare property near world-renowned beach resorts in Mactan Island, this world-class hotel offers the comfort of home with all the amenities of an international hotel. It is comfortably close to the Mactan Export Processing Zone II and is only 15 minutes away from the Mactan International Airport. The hotel is also within striking distance of major commercial centres and tour destinations.



Unit Size/Max Occupancy:

1 Bedroom / 4



Unit Amenities:

- 24-hour room service
- Daily local newspaper
- Full bath with bath tub
- Hairdryer
- broadband internet access
- Telephone
- Television



Resort Facilities:

- Business centre
- Car rental
- Gift shop and convenience store
- Gymnasium
- Laundry service
- Lounge
- Prana medispa
- Safety deposit boxes
- Sports and convention hall
- Swimming pool



Area Facilities:

- Basilica Minore del Santo Nino
- Beach
- Business & Financial District
- Fort San Pedro
- Megellan's Cross
- Plaza Independencia
- Shopping centres



Check-in: 2pm
Check-out: 12pm

Nearest Airport: Mactan-Cebu International Airport (7km)
Address: Maximo Patalinghug Jr. Avenue, Lapu-Lapu City 6015 Cebu Philippines
Tel: +63 32 3414586
Web: www.xchangeworld.com

Crown Regency Prince Resort, Boracay

Strategically located at Station 1, at the crossing of the main road and the road leading to Bolabog Beach, Crown Regency Prince Resort perfectly integrates all these into a cozy, homegrown atmosphere. Signifying the Earth element, the resort draws its passionate ambiance from the rich traditions of its vast stylistic range of past and contemporary art that is echoed in the rooms with a blend of modern amenities, and all complemented by the island's warm hospitality.



Unit Size/Max Occupancy:

Hotel Unit / 2



Unit Amenities:

- Air-conditioning
- Cable TV
- Coffee & Tea making facilities
- Full bath
- Hot and cold shower
- Television



Resort Facilities:

- 24/7 quick mart
- Wi-fi zone



Area Facilities:

- Bat Cave
- Crystal Cove
- Island tours
- Kar-Tir Shell Museum
- Mount Luho
- White Beach
- Willy's Rock



Check-in: 2pm
Check-out: 12pm

Nearest Airport: Caticlan International Airport (5km)
Address: Boat Station 1, Bolabog Road, Barangay Balabag, Malay, Aklan, Boracay Island 5608 Philippines
Tel: +603 2179 9000 / +603 2164 7788
Web: www.xchangeworld.com

One Tagaytay Place Hotel Suites, Tagaytay

At One Tagaytay Place Hotel Suites, your idea of the perfect day comes alive. Just a mere 90-minute drive from Metro Manila, you can enjoy an idyllic holiday experience brimming with delightful comforts and surrounded by a gloriously peaceful ambience. Engulfed in the refreshing vibe of Tagaytay, the hotel's wealth of amenities appeals to your senses. Stay in bed a little longer and enjoy the sumptuous comforts of a richly furnished guestroom. Indulge in beauty treatments, local delicacies, and other pleasurable choices at the commercial complex.



Unit Size/Max Occupancy:

Hotel Unit / 2



Unit Amenities:

- Air-conditioning
- Coffee and tea making facilities
- Daily newspapers
- DVD player / Wi-fi access
- Electronic room safe
- Hair dryer
- LCD TV with cable channels
- Microwave oven
- Mini bar
- Telephone (IDD/NDD access)



Resort Facilities:

- Adult and children pools
- Ample parking lots
- Azalea Restaurant & Bar
- Business Center
- Commercial Center
- Conference and meeting rooms
- Fitness center
- Game room
- Spa and wellness
- Tower Lounge Steak Bar



Area Facilities:

- Casino Filipino-Tagaytay
- Dining and entertainment along the Tagaytay Ridge
- Paradizoo Theme Farm
- Picnic Grove
- People's Park in the Sky
- Taal Lake and Volcano
- Tagaytay Circle (Rotunda)
- Tagaytay Picnic Groove



Check-in: 2pm
Check-out: 12pm

Nearest Airport: Manila Ninoy Aquino International Airport (MNL) (45km)
Address: Barrio Sungay, Tagaytay City, Philippines
Tel: +632 584 4111
Web: www.xchangeworld.com

Clube Praia Da Oura, Albufeira

Club Praia da Oura is perfectly positioned on the golden beach of Albufeira, part of the famous Algarve region of Portugal, one of Europe's foremost holiday destinations. The Algarve enjoys the best year-round climate in Europe, with more hours of sunshine than California, and is famous for its fantastic golf courses, stunning beaches, wonderful open markets, delicious food, wine and lively nightlife. With so much to see and do, it is truly a European paradise!



Unit Size/Max Occupancy:

1 Bedroom / 4



Unit Amenities:

- Fully equipped bathroom with hairdryer
- Fully equipped kitchen
- Furnished veranda or balcony
- Iron & ironing board
- Safe deposit box
- Satellite TV
- Telephone
- Wi-fi internet access



Resort Facilities:

- Baby-sitting service
- Beach
- Bowling green
- Car rental
- Children's play area
- Jacuzzi
- Live entertainment
- Outdoor swimming pool
- Restaurant & bar
- Sauna



Area Facilities:

- Aqualand
- Cliff Richard's Vineyard
- Golf / tennis
- Dolphin watching
- Jeep safari
- Lagos / Monchique / Sagres
- Sailing / surfing
- Slide & Splash
- Zoomarine



Check-in: 5pm
Check-out: 10am

Nearest Airport: Faro Airport (45km)
Address: Rua Oliveira Martins, 8200-911, Albufeira, Algarve, Portugal
Tel: +351 289 590 324
Web: www.xchangeworld.com

Club La Costa Benal Beach, Málaga

The apartment block is surrounded by swimming pools set in landscaped gardens with a tropical pool bar, watershoots and floodlights for night swimming. On-site there are bars and restaurants, gymnasium, sauna and squash court. Shops and discos are within a few minutes' walk and the Tivoli Amusement Park is 2km away.



Unit Size/Max Occupancy:

Studio Unit / 2
1 Bedroom / 4



Unit Amenities:

- Coffee maker
- Microwave
- Partially equipped kitchen
- Satellite TV



Resort Facilities:

- Car rental
- Child care
- Games room
- Grocery store
- Health Club
- Hot tub / sauna
- Indoor and outdoor swimming pool
- Medical facilities
- Restaurant / snack bar
- Squash



Area Facilities:

- Aquapark / beach
- Casino / disco
- Fishing / horse riding
- Golf / tennis
- Live entertainment
- Puerto Banus Marina
- Sailing / boating
- Scuba diving / water skiing / wind surfing
- Selwo Park / Tivoli World

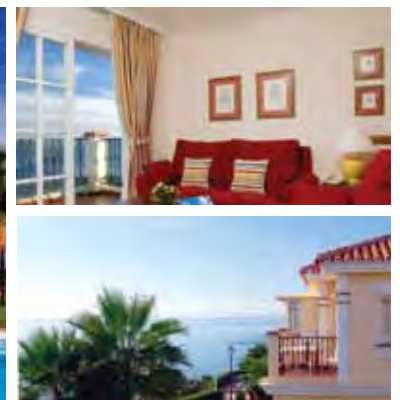


Check-in: 4pm
Check-out: 10am

Nearest Airport: Malaga Airport (13km)
Address: Ctra. de Cádiz Km 221.7, 29630 Benalmadena-Costa, Málaga, Spain
Tel: +34 95 244 2104
Web: www.xchangeworld.com

Club La Costa Castillo Del Rey, Málaga

Club la Costa at Castillo del Rey is located within Urbanisation Marina del Sol, just 4 kms from the coastal town of Fuengirola. The resort overlooks the ruins of the famous Arabic castle "Sohail", the Mediterranean sea to the front and a mountain range to the rear. Fuengirola is a bustling town with an open air market every Tuesday throughout the year.



Unit Size/Max Occupancy:

1 Bedroom / 4



Unit Amenities:

- Balcony
- CD / DVD player
- Dishwasher
- Full kitchen or kitchenette
- Hairdryer
- Iron & iron board
- Jacuzzi
- Microwave oven
- Safe
- Satellite TV



Resort Facilities:

- Bar
- Cash dispenser
- Children's pool
- Games room
- Horse riding
- Jacuzzi
- Medical centre
- Restaurant & snack bar
- Swimming pool
- Tennis court



Area Facilities:

- Beach
- Casino
- Golf
- Gymnasium / sauna
- Horse riding
- Puerto Banus Marina
- Sailing / windsurfing
- Scuba diving / fishing
- Sea Life Theme Park
- Picasso museum / Tivoli World



Check-in: 4pm
Check-out: 10am

Nearest Airport: Malaga Airport (27km)
Address: Urb. Marina del Sol, Ctra. Cádiz Km 206, 29649 Mijas Costa, Málaga, Spain
Tel: +34 95 266 9900
Web: www.xchangeworld.com

Club La Costa Marina Del Rey, Málaga

Marina del Rey enjoys uninterrupted views of the Mediterranean Sea and distant mountain ranges and is pleasantly situated in an elevated position on the internationally renowned Costa del Sol, between Benalmadena Costa and Marbella. The Marina del Rey apartments are overlooking the Moorish "Sohail Castle", the sparkling blue sea and the nearby holiday resort of Fuengirola. Malaga, Fuengirola and Marbella are no more than a short drive away and offer excellent shopping and an exciting nightlife and are long established as a major international holiday destination.



Unit Size/Max Occupancy:

1 Bedroom / 4



Unit Amenities:

- Full kitchen or kitchenette
- Hairdryer
- Iron & iron board
- Microwave oven
- Radio
- Safe
- Satellite TV
- Telephone
- Washer



Resort Facilities:

- Bar
- Bicycle rental
- Games room / tennis court
- Internet access
- Live entertainment
- Medical centre
- Playground area
- Restaurant & snack bar
- Security
- Swimming pool / children's pool



Area Facilities:

- Aquapark / beach
- Casino
- Fishing / scuba diving
- Golf / horse riding
- Gymnasium / sauna / jacuzzi
- Picasso Museum
- Puerto Banus Marina
- Sailing / boating / windsurfing
- Sea Life Theme Park / Selwo Park
- Tivoli World



Check-in: 4pm
Check-out: 10am

Nearest Airport: Malaga Airport (27km)
Address: Urb. Las Farolas, Ctra. Cádiz Km 206, 29649 Mijas Costa, Málaga, Spain
Tel: +34 95 266 9900
Web: www.xchangeworld.com

Club La Costa Marina Del Sol, Málaga

These superior holiday apartments at Marina del Sol enjoy a privileged position on Spain's sunny Costa del Sol, situated on the coast, close to Fuengirola. Visit stylish Marbella, renowned for its elegant shops, its picturesque old town, the Tivoli World Entertainment Park and several water parks, just some of the attractions that are guaranteed to keep the whole family entertained. As well as more than 30 first class golf courses, horse riding, tennis, hot air balloon rides and every kind of water sports imaginable.



Unit Size/Max Occupancy:

Studio Unit / 2
1 Bedroom / 4



Unit Amenities:

- Full kitchen or kitchenette
- Hairdryer
- Iron & iron board
- Microwave oven
- Radio
- Safe
- Satellite TV
- Telephone
- Washer



Resort Facilities:

- Bar
- Bicycle rental
- Children's pool / playground
- Games room
- Internet access
- Live entertainment
- Medical centre
- Restaurant & snack bar
- Swimming pool
- Tennis court



Area Facilities:

- Aquapark
- Beach
- Casino
- Fishing / scuba diving
- Golf / horse riding
- Picasso Museum
- Puerto Banus Marina
- Sailing / boating / windsurfing
- Sea Life Theme Park
- Selwo Park / Tivoli World



Check-in: 4pm
Check-out: 10am

Nearest Airport: Malaga Airport (27km)
Address: Urb. Las Farolas, Ctra. Cádiz Km 206, 29649 Mijas Costa, Málaga, Spain
Tel: +34 95 266 9900
Web: www.xchangeworld.com

Club La Costa Marina Dorado, Málaga

The Marina Dorada apartments are in a secluded corner of Club la Costa at Marina del Sol, overlooking the Mediterranean to the south and the Sierra Mijas and distant Sierra Nevada to the north. The attractively furnished and decorated apartments are set in landscaped gardens complete with fountains and swimming pool. Additional facilities include, jacuzzi, riding stables and restaurants.



Unit Size/Max Occupancy:

1 Bedroom / 4



Unit Amenities:

- Full kitchen or kitchenette
- Hairdryer
- Iron & iron board
- Microwave oven
- Radio
- Safe
- Satellite TV
- Telephone
- Washer



Resort Facilities:

- Bar
- Bicycle rental
- Children's pool / playground
- Games room
- Internet access
- Live entertainment
- Medical centre
- Restaurant & snack bar
- Swimming pool
- Tennis court



Area Facilities:

- Aquapark / beach
- Casino
- Fishing / scuba diving
- Golf / horse riding
- Gymnasium / sauna / jacuzzi
- Picasso Museum
- Puerto Banus Marina
- Sailing / boating / windsurfing
- Sea Life Theme Park / Selwo Park
- Tivoli World



Check-in: 4pm
Check-out: 10am

Nearest Airport: Malaga Airport (27km)
Address: Urb. Las Farolas, Ctra. Cádiz Km 206, 29649 Mijas Costa, Málaga, Spain
Tel: +34 95 266 9900
Web: www.xchangeworld.com

Club La Costa Sierra Marina, Málaga

Close to the lively town of Fuengirola, Sierra Marina occupies an elevated position, enjoying lovely coastal and mountain views. Historic Gibraltar and Malaga are well worth exploring. From here you can also visit the ancient town of Ronda, home to Spain's oldest bullring, and the city of Granada's legendary Alhambra Palace. The sub-tropical gardens, with their abundance of exotic palms, mimosa trees, banana plantations and exotic bougainvillea, make a delightful setting for this self-contained resort, with its excellent range of facilities.



Unit Size/Max Occupancy:

1 Bedroom / 4



Unit Amenities:

- Full kitchen or kitchenette
- Hairdryer
- Iron & iron board
- Microwave oven
- Radio
- Safe
- Satellite TV
- Telephone
- Washer



Resort Facilities:

- Bar
- Bicycle rental
- Children's pool / playground
- Games room
- Internet access
- Live entertainment
- Medical centre
- Restaurant & snack bar
- Swimming pool
- Tennis court



Area Facilities:

- Aquapark / beach
- Casino
- Fishing / scuba diving
- Golf / horse riding
- Gymnasium / sauna / jacuzzi
- Picasso Museum
- Puerto Banus Marina
- Sailing / Boating / windsurfing
- Sea life theme Park / Selwo Park
- Tivoli World



Check-in: 4pm
Check-out: 10am

Nearest Airport: Malaga Airport (27km)
Address: Urb. Las Farolas, Ctra. Cádiz Km 206, 29649 Mijas Costa, Málaga, Spain
Tel: +34 95 266 9900
Web: www.xchangeworld.com

Grand Palladium Palace Resort & Spa, Ibiza

The Grand Palladium Palace Ibiza Resort & Spa boasts a privileged location right on the beautiful sandy beach of Playa d'en Bossa alongside the protected natural park of Las Salinas. It is located just 6 km from the centre of Ibiza town, and 4 km from the airport.

It was completely refurbished in 2007, with all areas cleverly designed so as to ensure that the luxurious and modern facilities are in harmony with the natural surroundings of the location.



Unit Size/Max Occupancy:

Hotel Unit / 2



Unit Amenities:

- Air-conditioning
- Satellite TV
- Electronic safe
- Hair dryer
- Tea and coffee making facilities
- Bathrobes and slippers
- Iron and ironing board



Resort Facilities:

- 4 restaurants
- Bars
- Swimming pools
- Spa
- Hairdresser and beauty salon
- Boutique
- Night entertainment
- Mini-cinema
- Mini-disco
- Gymnasium



Area Facilities:

- Pool
- Beach
- Aqua gym
- Aerobic
- Table tennis
- Racket games
- Water polo
- Archery
- Jogging track
- Ball games



Check-in: 2pm
Check-out: 12pm

Nearest Airport: Ibiza airport (Approximately 4 km away)
Address: Carretera Playa d'en Bossa s/n 07817 Sant Jordi de ses Salines, Ibiza, Spain
Tel: +34 971 396 784
Web: www.xchangeworld.com

Sunningdale Village, Tenerife

The resort is located a short drive to the popular tourist centres of Playa Las Americas, Los Cristianos, and other beautiful beaches. Also close by is the fishing village of Los Abrigos, well known for its excellent seafood restaurants. The apartments are set amidst colourful landscaped gardens which are in bloom throughout the year and complement the Canarian architecture to create a paradise that will make your holiday a truly memorable one.



Unit Size/Max Occupancy:

1 Bedroom / 4
2 Bedroom / 6



Unit Amenities:

- Ceiling fans
- Dishwasher (2 bedroom units only)
- Fully equipped kitchen
- Microwave
- Refrigerator / freezer
- Telephone
- Television / video
- Terrace
- Washing machine



Resort Facilities:

- Children's pool & playground
- Free form heated swimming pool
- Health & fitness club
- Mini-golf
- Restaurants & bar
- Squash court



Area Facilities:

- Aquapark
- Beach
- Boat excursions
- Fishing
- Golf / tennis / horse riding
- Loro Park / Siam Park
- Los Gigantes
- Mount Teide National Park
- Watersports

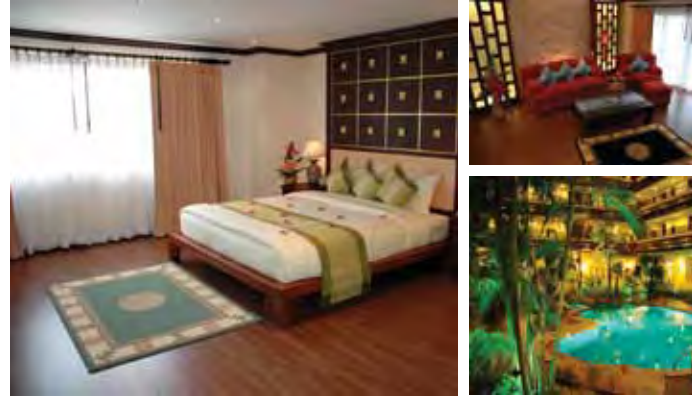


Check-in: 4pm
Check-out: 10am

Nearest Airport: Tenerife South Airport (Reina Sofia) (5km)
Address: Sunningdale Village, Golf del Sur, San Miguel de Abona, 38620 Tenerife
Tel: +34 922 73 8183
Web: www.xchangeworld.com

Absolute Nirvana Place, Pattaya

Nirvana Place is ideally situated between the two famous beaches of Jomtien and Pattaya, overlooking the turquoise waters of the Gulf of Siam with the bustling streets and skyline of the city in the distance. From the moment you enter Nirvana Place, you will feel like you are in a sanctuary of elegance, luxury and tranquillity, combined with a sense of privacy.



Unit Size/Max Occupancy:

Hotel Unit / 2



Unit Amenities:

- Baby crib
- Bathrobes
- Data port / complimentary internet usage
- DVD player
- Hair dryer
- Minibar
- Room deposit box
- Telephone
- Television



Resort Facilities:

- Bar
- Business centre
- Car hire
- Child care service
- Dry cleaning and laundry
- Gymnasium / sauna
- Restaurants
- Room service
- Swimming pool



Area Facilities:

- Botanical Garden
- Central Festival Pattaya Beach
- Outlet Mall Pattaya
- Pattaya City
- Siam Country Club



Check-in: 4pm
Saturday
Check-out: 10am
Saturday

Nearest Airport: Suvarnabhumi Airport (120km)
Address: 482/1/57, Moo 12, Thappraya Rd, Nongprue, Banglamung, Chonburi 20260, Thailand
Tel: +66 38 259 700
Web: www.xchangeworld.com

Absolute @ Q Signature Resort & Spa, Koh Samui

Absolute Private Residence Club @ Q Signature Spa & Resort offers guests an environment of Thai elegance and tropical living. Koh Samui is known as a tranquil island getaway. With its lush green vegetation and vast coconut plantations, this beautiful island rises up from warm, blue, crystal-clear seas to welcome all visitors to its friendly shores.



Unit Size/Max Occupancy:

Studio Unit / 2
1 Bedroom / 4



Unit Amenities:

- Alarm clock
- Balcony / Terrace
- Bathrobe
- Bathroom amenities
- Hair dryer
- Internet access
- Kitchen
- Safety box
- Telephone
- Television



Resort Facilities:

- 24-hour reception
- Bar
- Baby sitting service
- Business centre
- Coffee shop
- Fitness centre
- Live entertainment
- Restaurant
- Spa centre
- Swimming pool



Area Facilities:

- Big Buddha
- Cheong Mon Beach
- Chaeweng Beach
- Elephant trekking



Check-in: 3pm
Check-out: 10am

Nearest Airport: Samui International Airport (13km)
Address: 24 / 73 Moo 5 Tamboon Boh Phut, Koh Samui, Suratthani, 84320, Thailand
Tel: +66 77 428 100
Web: www.xchangeworld.com

Absolute Sea Pearl Beach Resort, Phuket

Absolute Sea Pearl Beach Resort is located on sandy Patong Beach, one of the most beautiful beaches on Phuket Island and within walking distance to the buzzing shopping and entertainment district of Patong.



Unit Size/Max Occupancy:

Studio Unit / 2
1 Bedroom / 4



Unit Amenities:

- Air-conditioning
- Coffee/tea making facility
- Hairdryer
- In-room safety boxes
- Minibar
- Television



Resort Facilities:

- 24-hour reception
- Baby sitting service
- Business centre
- Currency exchange
- Laundry service
- Live entertainment
- Outdoor swimming pool
- Pool bar
- Restaurant
- Spa



Area Facilities:

- Jungceylon Patong Shopping
- Patong Beach
- Phuket Fantasea Theme Park
- Phuket Country Club
- Phuket Town
- Royal Phuket Marina



Check-in: 4pm
Check-out: 10am

Nearest Airport: Phuket International Airport (40km)
Address: 42/1 Taveewong Road, Patong Beach, Phuket 83150, Thailand
Tel: +66 76 341 901
Web: www.xchangeworld.com

Citin Plaza, Phuket

Citin Plaza Patong hotel is located in a peaceful area just a short stroll from the heart of Patong, one of Phuket's most sought after holiday hotspots. Filled with shops, restaurants, bars and cafes, Patong draws people from all around the world.

The hotel boasts brand new elegantly designed rooms complete with balconies, contemporary furniture and organic wall decorations along with a 32" LCD TV, stocked minibars and professional safes. For a respite from the excitement and bustle of Patong's main strip, Citin Plaza offers a comfortable and peaceful retreat.



Unit Size/Max Occupancy:

Hotel Unit / 2



Unit Amenities:

- Individually controlled air-conditioning
- 32" LCD TV with cable and satellite TV channels
- DVD player (on request)
- Wireless Internet
- Mini fridge & mini bar
- Coffee/tea making facilities
- Work area with desk chair
- Telephone with IDD
- Personal electronic safe
- Private Balcony



Resort Facilities:

- 24-hour reception
- Bistro Restaurant
- Bar Lounge
- Rooftop swimming pool
- Wireless Internet
- Laundry and dry-cleaning service
- Tours, car rental and travel services
- Airport transfers (kindly contact the property for more details)
- 24-hour security and CCTV surveillance



Area Facilities:

- Jungceylon Shopping Mall
- Bangla Road
- Simon Cabaret
- Dino Park Mini Golf
- Wat Suwan Khiri Khet
- Phuket Fantasea



Check-in: 2pm
Check-out: 12pm

Nearest Airport: Phuket International Airport (45 minutes away)
Address: 34/50-57 Prachanukhro Road, Patong, Kathu, Phuket 83150 Thailand
Tel: +603 7949 8288
Web: www.xchangeworld.com

Pattaya Hill Resort, Pattaya

This Resort has been designed specially to take advantage of the superb panoramic view of both Pattaya Bay and Jomtien Beach from its private balconies. Guests of Pattaya Hill Resort will be able to enjoy swimming in the beautifully designed standard-sized swimming pool or just relax in an open-air jacuzzi. Fitness enthusiasts can use the full range of sports and exercise equipment in the mini-gym. The resort is only 5 minutes by taxi or a 25 minute walk to the beach.



Unit Size/Max Occupancy:

1 Bedroom / 4



Unit Amenities:

- Air-conditioning
- Daily maid service
- Hot water shower and bathtub
- Internet connection
- Mini Bar / Refrigerator
- Private balcony with view
- Telephone
- Television



Resort Facilities:

- Gymnasium
- Massage service
- Poolside bar
- Safety deposit box
- Sauna and steam room
- Snooker
- Swimmig pool



Area Facilities:

- Beach
- Car rental
- Entertainment
- Fishing
- Horse riding
- Medical
- Restaurants
- Water skiing
- Windsurfing



Check-in: 4pm
Check-out: 10am

Nearest Airport: Suvarnabhumi International Airport (160km)
Address: 329/4 Pratumnak Road, Banglamung, Pattaya, Chonburi 20260 Thailand
Tel: +66 3825 0261
Web: www.xchangeworld.com

Royal Bella Vista Country Club, Chiang Mai

Royal Bella Vista Country Club nestled in the hills of Chiang Mai is a perfect gateway for those seeking tranquility; natural beauty and luxury accommodation. Styled on a European village, with cobbled streets, flower covered cottages, spectacular gardens and gently flowing streams, here you are as close to nature as luxury will permit.



Unit Size/Max Occupancy:

2 Bedroom / 6



Unit Amenities:

- Air-conditioning (bedroom)
- BBQ pit
- Kitchen facilities
- Mini bar
- Open fireplace
- Private garden patio
- Satellite TV
- Telephone



Resort Facilities:

- Bar
- Car rental
- Children's playground
- Entertainment
- Laundry
- Restaurant & bar
- Shuttle bus to city (chargeable)
- Spa & massage
- Swimming pool
- Tennis court
- Wireless internet



Area Facilities:

- Baan Tawai Handicraft Village
- Doi Suthep Temple
- Golf
- Jungle trekking with guide
- Mae Sa Elephant Camp
- Mae Sa Waterfall
- Queen Sirikit Botanic Garden



Check-in: 4pm
Friday
Check-out: 10am
Friday

Nearest Airport: Chiang Mai International Airport (30km)
Address: 135 Moo 5, Hangdong-Samoong Road, Baanpong, Hangdong District Chiang Mai, 50230 Thailand
Tel: +66 53 365318 Ext 809
Web: www.xchangeworld.com

Birtur Sunset Villa

Located in the charming, seaside town of Yalılıkavak in Turkey, Birtur Sunset Villas is the perfect escape from the busy, stressful city life.

Birtur Sunset Villas are designed with a modern yet minimalist touch to ensure your view of the ocean is the centre of attention at all times. Located 200m from the beach, you can enjoy the gentle ocean breeze on your terrace all day. Each villa has 2 bedrooms and comes equipped with essential amenities including television, kitchenette, air-conditioner, iron and ironing board, hair dryer, making it perfect for families or couples.



Unit Size/Max Occupancy:

2 Bedroom / 4



Unit Amenities:

- Television
- Complimentary toiletries
- Kitchenette
- Air-conditioned
- Hairdryer
- Iron and ironing board



Resort Facilities:

- Swimming Pool
- Beach
- Auto rental
- Restaurant and bar



Area Facilities:

- Boating
- Fishing
- Water skiing
- Scuba diving
- Shopping area
- Golf
- Grocery store
- Laundry service



Check-in: 2pm
Check-out: 12pm

Nearest Airport: Bodrum International Airport (45km)
Address: GeriD Altı Mevkii Hacıyeri Cad, GeriD Evleri Yalılıkavak-Bodrum, Turkey
Tel: +603 7949 8288
Web: www.xchangeworld.com

Blue Green Residence, Fethiye

Located 300 metres from the Calis Beach, Blue Green Residence features an outdoor pool and a garden with palm trees. Apartments are well-decorated and include a satellite TV, air conditioning and a furnished balcony. There is a living room with a sofa bed; and the kitchen is equipped with an oven, refrigerator, stove, as well as a dishwasher and an electric kettle. There is bar on the site of Blue Green Residence serving refreshing drinks and snacks.

Guests can benefit from bicycle rental; tour desk and the local businesses offer water sports activities such as diving; or even just enjoy the sun on the sun loungers by the pool area.



Unit Size/Max Occupancy:

2 Bedroom / 4



Unit Amenities:

- Individually controlled air-conditioning
- 32" LCD TV with cable and satellite TV channels
- DVD player (on request)
- Wireless Internet
- Mini fridge & mini bar
- Coffee/tea making facilities
- Work area with desk chair
- Telephone with IDD
- Personal electronic safe
- Private Balcony



Resort Facilities:

- 24-hour reception
- Bistro Restaurant
- Bar Lounge
- Rooftop swimming pool
- Wireless Internet
- Laundry and dry-cleaning service
- Tours, car rental and travel services
- Airport transfers (kindly contact the property for more details)
- 24-hour security and CCTV surveillance



Area Facilities:

- Jungceylon Shopping Mall
- Bangla Road
- Simon Cabaret
- Dino Park Mini Golf
- Wat Suwan Khiri Khet
- Phuket Fantasea



Check-in: 2pm
Check-out: 12pm

Nearest Airport: Dalaman Airport (48km)
Address: Blue Green Sitesi, Köçek Mustafa Cad. No:62 Koca Çalış. Sahili 48300 Çalış, Fethiye, Mugla, Turkey
Tel: +603 7949 8288
Web: www.xchangeworld.com

Club Green Valley, Marmaris

Club Green Valley is only a 5-minute walk from the sandy Marmaris beach; and the main street with popular bars and restaurants is just a few steps away. It offers an outdoor pool and fully equipped apartments. The bright apartments of Green Valley feature a kitchen area that includes a refrigerator and a dining table. They also have air conditioning and a spacious balcony for guests to rest in the privacy of their apartments. Turkish and international cuisine can be tasted in the à la carte restaurant. Delicious drinks are also available at the hotel bar and can be enjoyed next to the pool area.



Unit Size/Max Occupancy:

2 Bedroom / 6



Unit Amenities:

- Television
- Coffee & tea making facilities
- Complimentary toiletries
- Kitchenette
- Air-conditioned
- Hairdryer
- Internet connection



Resort Facilities:

- Swimming Pool
- Children Pool
- Games Room
- Grocery Store
- Hairdresser
- Restaurant
- Laundry services
- Snack bar
- Child care
- Auto rental



Area Facilities:

- Beach
- Casino
- Medical facilities
- Shopping area



Check-in: 2pm
Check-out: 12pm

Nearest Airport: Dalaman Airport (95km)

Address: Siteler mahallesi, Yunus Nadi caddesi No:93 48700 Marmaris, Mugla, Turkey

Tel: +603 7949 8288

Web: www.xchangeworld.com

Club Mavi, Bodrum

Overlooking the quiet bay of Akyarlar, Club Mavi Akyarlar Hotel offers air conditioned apartments with a kitchenette and a private balcony. The hotel's shuttle service takes guests to the nearest beach. The apartments at Club Mavi Akyarlar feature a modern interior decorated with light wooden furniture. All apartments have a flat-screen TV with satellite channels, a kitchenette with a refrigerator, and a private bathroom. Guests can relax in the surrounding garden. Children can have fun at the hotel's playground. Famous sandy beach of Akyarlar is only 200m far from the resort



Unit Size/Max Occupancy:

2 Bedroom / 4



Unit Amenities:

- Television
- Coffee & tea making facilities
- Complimentary toiletries
- Kitchenette
- Air-conditioned
- Hairdryer
- In-room safe



Resort Facilities:

- Swimming Pool
- Children Pool
- Restaurant
- Laundry services
- Snack bar
- Child care



Area Facilities:

- Beach
- Grocery store
- Medical facilities
- Shopping area



Check-in: 2pm
Check-out: 12pm

Nearest Airport: Bodrum-Milas International Airport (55km)

Address: Akyarlar Köyü Atatürk street. No 158 Bodrum, 48960 Muğla, Türkiye

Tel: +603 7949 8288

Web: www.xchangeworld.com

Seahorse Deluxe Hotel, Didim

Situated within lush landscaped gardens, Seahorse Deluxe Hotel offers units with 2 bedrooms and a kitchenette. Facilities include outdoor pools and a tennis court. Didim's beach is only 200meter away. Guests can get a relaxing massage at the 'Bora Bora Massage Island'. The reception can help arrange tours to Didim's main attractions. The Atlantis Aqua Restaurant serves local Turkish and international cuisine. Guests can enjoy a variety of drinks and snacks at the Corner Bistro.



Unit Size/Max Occupancy:

2 Bedroom / 4



Unit Amenities:

- Television in one of the bedroom
- Coffee & tea making facilities
- Complimentary toiletries
- Kitchenette
- Air-conditioned
- Hairdryer



Resort Facilities:

- Swimming Pool
- Children Pool
- Health Care Centre
- Restaurant Grocery store
- Grocery store
- Games room
- Exercise equipment
- Snack bar
- Child care
- Tennis court



Area Facilities:

- Beach
- Boating
- Water Skiing
- Wind Surfing
- Shopping area



Check-in: 2pm
Check-out: 12pm

Nearest Airport: Bodrum Internationa Airport (90km)
Address: ASeahorse Deluxe Hotel, Altinkum Mahallesi, 217 sokak, No: 1 Gevrek Mevkii (Yesilkent), Didim 09270 Turkey
Tel: +603 7949 8288
Web: www.xchangeworld.com

Verdi Homes, Yalıkavak

Situated along the Aegean shores, the 2-bedroom apartments at Verdi Homes include a flat-screen TV and a kitchenette. The 20-meter long private dock offers free sun loungers and cushions. The spacious living room features a well-decorated seating area, air conditioning and a floor-to-ceiling sliding window opening to a balcony. Bathroom is stocked with free toiletries and a hairdryer.

The kitchenette at each apartment has a refrigerator, stove and an electric kettle. Necessary kitchenware and a dining table are provided. The popular restaurants of the area are within a 3 minutes' walk from the site.



Unit Size/Max Occupancy:

2 Bedroom / 4



Unit Amenities:

- Television
- Complimentary toiletries
- Kitchenette
- Hairdryer
- Iron and ironing board



Resort Facilities:

- Beach
- Water skiing
- Boating
- Fishing



Area Facilities:

- Grocery store
- Hairdresser
- Laundry service
- Medical facilities
- Shopping area
- Restaurant



Check-in: 2pm
Check-out: 12pm

Nearest Airport: Bodrum International Airport (5.3km)
Address: Çökertme cad.Tepe sok.No:77 Yalıkavak 48000 Muğla, Turkey
Tel: +603 7949 8288
Web: www.xchangeworld.com

Xclusive Hotel Apartments, Dubai

Xclusive Hotel Apartments combines a contemporary blend of convenience and luxury while offering an outstanding range of facilities and personalised service. Our guests enjoy the accessibility of state-of-the-art rooms, daily services, Wi-Fi Internet access, entertainment and much more. The hotel also boasts an excellent health club including gym and a well maintained swimming pool with sundeck.



Unit Size/Max Occupancy:

1 Bedroom / 4



Unit Amenities:

- In-room safe
- Iron & iron Board
- Television with DVD player



Resort Facilities:

- 24-hr reception
- Gymnasium
- Housekeeping services
- Laundry services
- Meeting and conference facilities
- Swimming pool



Area Facilities:

- Burj al Arab
- Burj Dubai
- Burjuman Mall
- Dubai Museum
- Dubai Creek
- Gold Souk
- Grand Mosque
- Lamcy Plaza
- Mall of the Emirates
- The Dubai Heritage Village
- Wafi City Mall
- Wild wadi Water Park



Check-in: 2pm
Check-out: 12pm

Nearest Airport: Dubai International Airport (12km)
Address: Street 17B, Behind Spinneys next to Burjuman Mall. P.O Box: 126012, Dubai, United Arab Emirates
Tel: +971 4359 9925
Web: www.xchangeworld.com

Xclusive Maples Hotel Apartment, Dubai

Xclusive Maples Hotel Apartment is situated most conveniently in the heart of downtown Burdubai within walking distance of the Metro station, the Trade Center and shopping malls.

The hotel offers Studio, One-bedroom and Two-bedroom apartments. All are fully furnished and equipped with modern facilities, and designed to meet the varying needs of guests. Multi-national cuisine is available at the charming Café Maples.



Unit Size/Max Occupancy:

1 Bedroom / 4



Unit Amenities:

- TV with cable channels
- Balcony (optional)
- Fully-equipped open kitchen with a working counter
- Direct-dial telephone
- Complimentary toiletries
- Hairdryer (upon request)
- Iron/ironing board (upon request)
- Individual air conditioning unit
- In-room safe



Resort Facilities:

- Swimming pool
- Children's pool
- Exercise equipment
- Live entertainment (seasonal)
- Auto rental
- Laundry services
- Restaurant
- Concierge desk
- Doctor on call
- Fitness center
- Foreign exchange
- High speed internet (charges apply)



Area Facilities:

- Burjuman Shopping Mall
- Bank Street
- Metro Station



Check-in: 2pm
Check-out: 12pm

Nearest Airport: Dubai International Airport (15 minutes by car)
Address: Bldg. No. 20, Street No. 12, Mankhool Street, Dubai, UAE
Tel: +971 4 3599925
Web: www.xchangeworld.com

Have A Happy Holiday!



Resort Directory Index

Country/Section	Page No.
HOME RESORTS	
South Africa	
Centurion All Suite Hotel, Cape Town	8
Thailand	
Aspen Suites, Bangkok	8
Prana Beach Villas, Koh Samui	9
Prana Resorts Nandana, Koh Samui	9
Patong Tower Condominium, Phuket	10
Turkey	
Doğan Hotel, Antalya	10
LIMITED COLLECTION RESORTS	
India	
Alpine Club, Nainital, Uttarakhand	12
Clifftop Club, Auli, Uttarakhand	12
Heritage Resorts Coorg, Karnataka	13
Mountain Club, Bhimtal, Uttarakhand	13
The Den, Corbett National Park, Uttarakhand	14
Malaysia	
Impiana KLCC Hotel, Kuala Lumpur	14
Thailand	
Adelphi Suites, Bangkok	15
Arcadia Suites, Bangkok	15
Citin Garden Resort, Pattaya	16
Citin Loft Pattaya, Pattaya	16
Citadines Sukhumvit 8, Bangkok	17
Tunisia	
Caribbean World Mahdia Hotel, Mahdia	17
Caribbean World Monastir Hotel, Monastir	18
Caribbean World Nabeul Hotel, Nabeul	18
Caribbean World Venus Beach, Hammamet	19
USA	
Tuscana Champions Gate, Orlando, Florida	19

Country/Section	Page No.
EXCLUSIVE BOUTIQUE COLLECTION RESORTS	
Sri Lanka	
Tamarind Hill, Galle	22
The Park Street Hotel, Colombo	22
XCHANGEWORLD RESORTS	
Australia	
Bellbrae Country Club, Victoria	24
Cedar Lake Country Resort, Queensland	24
Lakeside Country Club, Victoria	25
Tamarind Sands, New South Wales	25
Austria	
Club La Costa Alpine Centre, Salzburg	26
Brazil	
Grand Palladium Imbassai Resort & Spa, Imbassai	26
China	
Absolute @ JinQiao International Garden Beijing	27
Crown Spa Resort, Hainan	27
Shanghai Manhattan Bund Business Hotel, Shanghai	28
Dominican Republic	
Grand Palladium Punta Cana Resort & Spa	28
Egypt	
Dreams Beach Marsa Alam	29
Dreams Beach Sharm El Sheikh	29
Dreams Vacation Sharm El Sheikh	30
Movenpick Resort Cairo - Pyramids	30
India	
Aditya Park, Hyderabad, Andhra Pradesh	31
Ambrosia Sarovar Portico, Haridwar, Uttarakhand	31
Citrus Chambers, Mahabaleshwar	32
Citrus Hotel, Goa	32
Citrus Hotels, Lonavala	33
Citrus Retreat, Alleppey	33
City Heart Sarovar Portico, Ludhiana, Punjab	34
Country Inn Bhimtal, Uttarakhand	34
Estuary Island, Poovar, Traivandrum, Kerala	35
Express Sarovar Portico, Faridabad, New Delhi	35
Four Points by Sheraton Jaipur, Rajasthan	36
Four Points by Sheraton Pune, Maharashtra	36
Gokulam Park, Kochi, Kerala	37
Hometel Chandigarh, Punjab	37

Country/Section	Page No.
India	
K2 @ Haveli Ratan	38
La Palace Sarovar Portico, Lucknow, Uttar Pradesh	38
Lily Sarovar Portico, Nashik, Maharashtra	39
Mahagan Sarovar Portico - Vaishali, New Delhi	39
Noorya Hometel, Pune, Maharashtra	40
Park Plaza Delhi CBD Shahdara, New Delhi	40
Phoenix Park Inn, Goa	41
Royal Goan Beach Club at Benaulim, Goa	41
Royal Goan Beach Club at Haathi Mahal, Goa	42
Royal Goan Beach Club at Monterio, Goa	42
Sarovar Portico, Ahmedabad, Gujarat	43
Sarovar Portico, Indore, Madhya Pradesh	43
Sarovar Portico, Jaipur, Rajasthan	44
Sarovar Portico Rajkot, Gujarat	44
Shraddha Inn, Shirdi, Maharashtra	45
The Corinthians Resort and Club, Pune, Maharashtra	45
Indonesia	
Emerald Villas, Bali	46
Royal Bali Beach Club Candidasa, Bali	46
Royal Bali Beach Club Jimbaran Bay, Bali	47
The Seminyak Village Resort & Villa, Bali	47
Jamaica	
Grand Palladium Jamaica Resort & Spa, Montego Bay	48
Kenya	
Royal Reserve Safari Beach & Country Club	48
Malaysia	
Country Villas Kajang, Selangor	49
Heritage Hotel Cameron Highlands, Pahang	49
Palace of the Golden Horses, Selangor	50
Resort Suite Pyramid Tower, Selangor	50
Sunway Hotel, Georgetown, Penang	51
The Legend Resort Cherating, Pahang	51
Mauritius	
Coral Azur Mont Choisy Hotel	52
Mexico	
Grand Palladium Vallarta Resort & Spa, Riviera Nayarit	52
Grand Palladium Riviera Resort & Spa, Riviera Maya	53

Country/Section	Page No.
Philippines	
Canyon Cove Beach Club, Batangas	53
Canyon Woods Residential Suites, Batangas	54
Crown Regency Beach Resort, Boracay	54
Crown Regency Hotels & Towers, Cebu	55
Crown Regency Residences Davao, Davao	55
Crown Regency Suites Mactan, Cebu	56
Crown Regency Prince Resort, Boracay	56
One Tagaytay Place Hotel Suites, Tagaytay	57
Portugal	
Clube Praia Da Oura, Albufeira	57
Spain	
Club La Costa Benal Beach, Málaga	58
Club La Costa Castillo Del Rey, Málaga	58
Club La Costa Marina Del Rey, Málaga	59
Club La Costa Marina Del Sol, Málaga	59
Club La Costa Marina Dorado, Málaga	60
Club La Costa Sierra Marina, Málaga	60
Grand Palladium Palace Resort & Spa, Ibiza	61
Sunningdale Village, Tenerife	61
Thailand	
Absolute Nirvana Place, Pattaya	62
Absolute @ Q Signature Resort & Spa, Koh Samui	62
Absolute Sea Pearl Beach Resort, Phuket	63
Citin Plaza, Phuket	63
Pattaya Hill Resort, Pattaya	64
Royal Bella Vista Country Club, Chiang Mai	64
Turkey	
Birtur Sunset Villa	65
Blue Green Residence, Fethiye	65
Club Green Valley, Marmaris	66
Club Mavi, Bodrum	66
Seahorse Deluxe Hotel, Didim	67
Verdi Homes, Yalıkavak	67
United Arab Emirates	
Xclusive Hotel Apartments, Dubai	68
Xclusive Maples Hotel Apartment, Dubai	68

Q-breaks

escape. explore. discover.

Beach

Family, Sports, Adventure





Tel: +603 7949 8288 / +91 22 6139 9500

Email: customercare@qvclub.com, customercare@xchangeworld.com, customercare@vanamala-india.com
www.qvclub.com • www.xchangeworld.com • www.vanamala-india.com